



## MEDIA KIT 2025-2026



# Ethos

Founded in 2008 by Lise Coirier, *TLmag* is an international annual print and online magazine dedicated to curating and capturing the collectible culture. It has evolved for fifteen years with creative influencers that have shaped the contemporary art and design scene. Published in French and English, and in English only from 2023, each publication focuses on a specific theme, while *TLmag Online Magazine* mirrors the ethos of the print editions with reviews and interviews that compliment the content featured in the yearly book, enriching its voice and critical perspective.

Extraordinary, diverse and abundant, *TLmag* advocates for authenticity, transcending different disciplines, from the contemporary applied arts to design and photography and revealing their hidden intersections and narratives.

*TLmag* becomes an essential resource for an ever-growing creative community – art and design-driven readers, creative professionals, artists, designers, architects, landscape and urban planners, philosophers, students, brands, art and design museums and institutions in search of precise, exceptional and unequalled creation.

TLmag is curated by:

SPAZIO  
—— NOBILE

*Contemporary Applied Arts, Design & Photography*



# Editorial Curators

## Lise Coirier & Gian Giuseppe Simeone

### Publishers & Editor-in-Chief



**Lise Coirier** (FR-BE), art historian, curator and publisher, and **Gian Giuseppe Simeone** (IT-SE), art historian and archaeologist, have been co-founders of Spazio Nobile since 2016.

With degrees in management and art history, French-born **Lise Coirier** has lived and worked in Brussels for 30 years. She has run her consultancy Pro Materia for over 20 years and is the founder and editor-in-chief of *TLMag* *True Living of Art & Design*. In addition to curating exhibitions and cultural projects, she has written and published several books on art and design.

Her husband and partner, **Gian Giuseppe Simeone**, is an art historian and archaeologist specialising in the conservation and valorisation of cultural and artistic heritage. Of Italian-Swedish origin, he is based in Brussels and works as a consultant for the European Commission and other national and international organisations on cooperation projects and programmes in the fields of contemporary creation and cultural heritage. His consultancy firm, Culture Lab, founded in 2002, focuses on the design and management of international cooperation projects and programmes in the field of culture, mainly funded by the European Union. He has also carried out several study, evaluation and consultancy missions in Europe, Africa and the Mediterranean, with the aim of highlighting the importance of culture in European Union policies and its role in socio-economic development. Gian Giuseppe Simeone is the author of several reference works on the study and recognition of the value of European and international culture and heritage.

[www.tlmagazine.com](http://www.tlmagazine.com) / [www.spazionobile.com](http://www.spazionobile.com) / [lise@tlmagazine.com](mailto:lise@tlmagazine.com)  
[@tlmag](https://www.instagram.com/tlmag) / [@spazionobilegallery](https://www.instagram.com/spazionobilegallery) / [@lisecoirier](https://www.instagram.com/lisecoirier)

## Blaire Dessent

### Editorial Print & Online Manager



For more than 20 years, Blaire Dessent has worked in the art and design industry in both commercial and editorial roles. Since 2018, she is involved as the Managing Editor and art/design contributor for the print issue of *TLmag*, and since 2022 for the online magazine. She is also a freelance writer, editor and copywriter specialising in contemporary design, craft, art and travel.

[www.blairedessent.com](http://www.blairedessent.com)  
[@blaivitrine](https://www.instagram.com/blaivitrine)  
[blaire@tlmagazine.com](mailto:blaire@tlmagazine.com)

## Antoine Jovenet

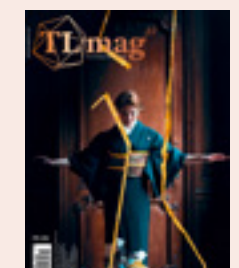
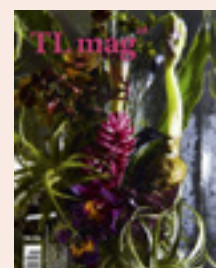
### Art Director & Graphic Designer

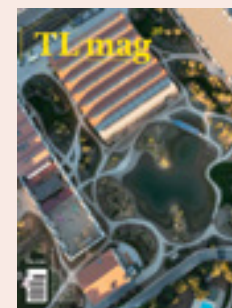
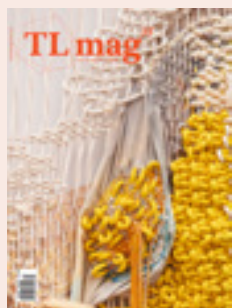
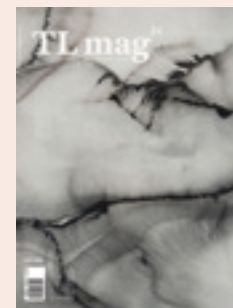
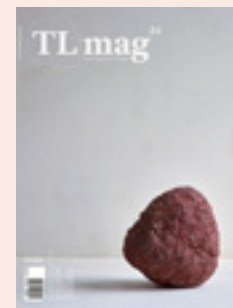
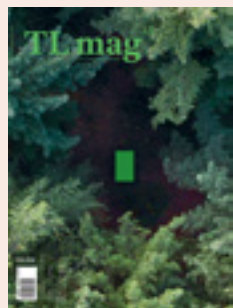
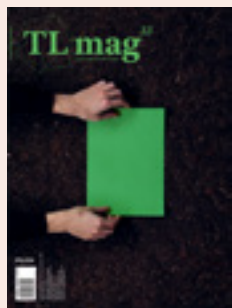


After studying applied arts and digital imaging, Antoine Jovenet spent 25 years exploring various areas of graphic design before specializing in print communication and publishing. He has been producing *TLmag* since 2022, as well as Spazio Nobile's collection of books dedicated to artists.

[www.dapunch.com](http://www.dapunch.com)  
[antoine.jovenet@gmail.com](mailto:antoine.jovenet@gmail.com)

# TLmag Covers 2008–2025





# A Book of Art & Essays

TLmag annual print edition (formerly biannual) is an art and design magazine founded in 2008 by publisher and editor-in-chief, Lise Coirier, and based in Brussels. Each issue explores specific cultural places, territorial regions, or the correlation between different creative and multidisciplinary scenes through in-depth stories, interviews, and photography portfolios. The structure of the magazine includes chapters dedicated to various features including: Special Guests (Interviews with creatives and change makers in the art, architecture and design fields), Mix and Match (featuring portfolios of projects, up & coming designers, trends, material research), Excellence & Creation (highlighting some of the most engaging and relevant designers and makers), Stories (in-depth reporting on heritage brands, people, companies or projects), Living with Art and Design (a look at collector culture, features on leading collectors and how they live with art and design), Real Life (food, city, travel reports).

## Recent themes 2020-2025:

S/S 2020: TLmag 33:  
*A New Age of Humanism*,  
Guest Editors: Formafantasma

A/W 2020: TLmag 34:  
*A Geology of Being*,  
Guest Editor: Amy Hilton

S/S 2021: TLmag 35:  
*Tactile, Textile, Texture*,  
Guest Editor: Anniina Koivu

A/W 2021: TLmag 36:  
*All Is Landscape*,  
Guest Editor: Bas Smets

S/S 2022: TLmag 37:  
*The State of Gold*,  
Guest Editor: Marco Sammiceli

A/W 2022: TLmag 38:  
*Origin*,  
Guest Editors:  
Lidewij Edelkoort & Philip Fimmano

2023: TLmag 39:  
*The Culture of the Object*,  
15-year anniversary

2024: TLmag 40:  
*The Ideal Home*,  
Guest Editor: Chris Dercon

## Upcoming theme 2025-2026:

TLmag 41: *Collecting Art /The Art of Collecting*, Guest Editor: Simon de Pury  
Release date: January 2026

## Copies

International: 20,000  
Benelux: 5,000  
France: 5,000  
Circulation: 30,000

## Sales Points & Stockists

### France & Benelux:

IPS & Exportpress

### Press shops and Bookstores :

Austria, Belgium, Canada,  
Denmark, France, Finland,  
Germany, Hong Kong, Italy,  
Japan, Korea, Luxemburg,  
Netherlands, Norway,  
Portugal, Singapore, Spain,  
Switzerland, Sweden,  
Taiwan, UK, US...

Galleries and cultural venues  
Design & Art fairs and events  
Spazio Nobile Gallery,  
Brussels

## ID Annual Print Magazine

EN  
304 pages  
Print Edition  
France/Benelux /EU:50 €  
UK: 43£ /Switzerland:  
48CHF /US: 53\$ /SGS 72  
Hong Kong: 415 HKD  
China 390 CNY  
Japan 8000 ¥  
NVW1717 / BRL 263

Online Edition on CAFEYN

## Subscriptions

### France & Benelux

1 year: 60 €  
2 years: 100 €  
3 years: 140 €

### International

1 year: 100 €  
2 years: 140 €  
3 years: 180 €

### On tablets

<https://www.cafeyn.co/fr/publication/tl-mag/21659116>

# Print Theme 2024

## *TLmag 40: The Ideal Home*

Guest Editor: Chris Dercon, Managing Director  
Fondation Cartier pour l'art contemporain

There are and have been hundreds of publications and media programs entitled 'ideal home'. What does this expression really mean and where does it come from? *TLmag40* will explore this theme of 'the ideal house' through the eyes and minds of leading academics, curators, artists, designers, architects and writers. It will question the meaning and intention of the expression and how it applies to contemporary culture. Is it a design or architecture question? A sustainability question? Or is it about the people who make it 'ideal'? *TLmag40* will also look back at historical 'ideal homes' and how it defined specific eras of our time and how it might do so for the future.

Chris Dercon is a director of cultural institutions and he has worked with design throughout his career, starting with a project with Robbrecht en Daem on the extension of Museum Boijmans van Beuningen in Rotterdam during the second half of the 90's. At the same time, he worked with Rem Koolhaas OMA, advising the architects on several cultural infrastructure projects. At Haus der Kunst, in the beginning of the 2000's, Dercon developed exhibitions of Droog Design, Konstantin Grcic, Herzog de Meuron, Rem Koolhaas, Martin Margiela, Carlo Mollino and Future Beauty: 30 Years of Japanese Fashion at Haus der Kunst in Munich. At Tate Modern, Dercon was the Director of Tate Modern for five-years, during which time he contributed to an important publication, which includes conversations between Dercon and architects Jacques Herzog and Pierre de Meuron, as well as landscape architect Günther Vogt, and interior designer Jasper Morrison. At the Volksbühne in Berlin, Chris Dercon worked with architect Francis Kéré and graphic designers Manuel Buerger and Till Wiedeck. In Paris, Chris Dercon has worked with Francois Chatillon and Atelier Senzu on the renovation of the Grand Palais in Paris. He is currently working on the future building of the Fondation Cartier with Jean Nouvel, in the summer of 2024, the exhibition Design and Sport, initiated by Dercon and curated by Konstantin Grcic will open at Musée du Luxembourg.

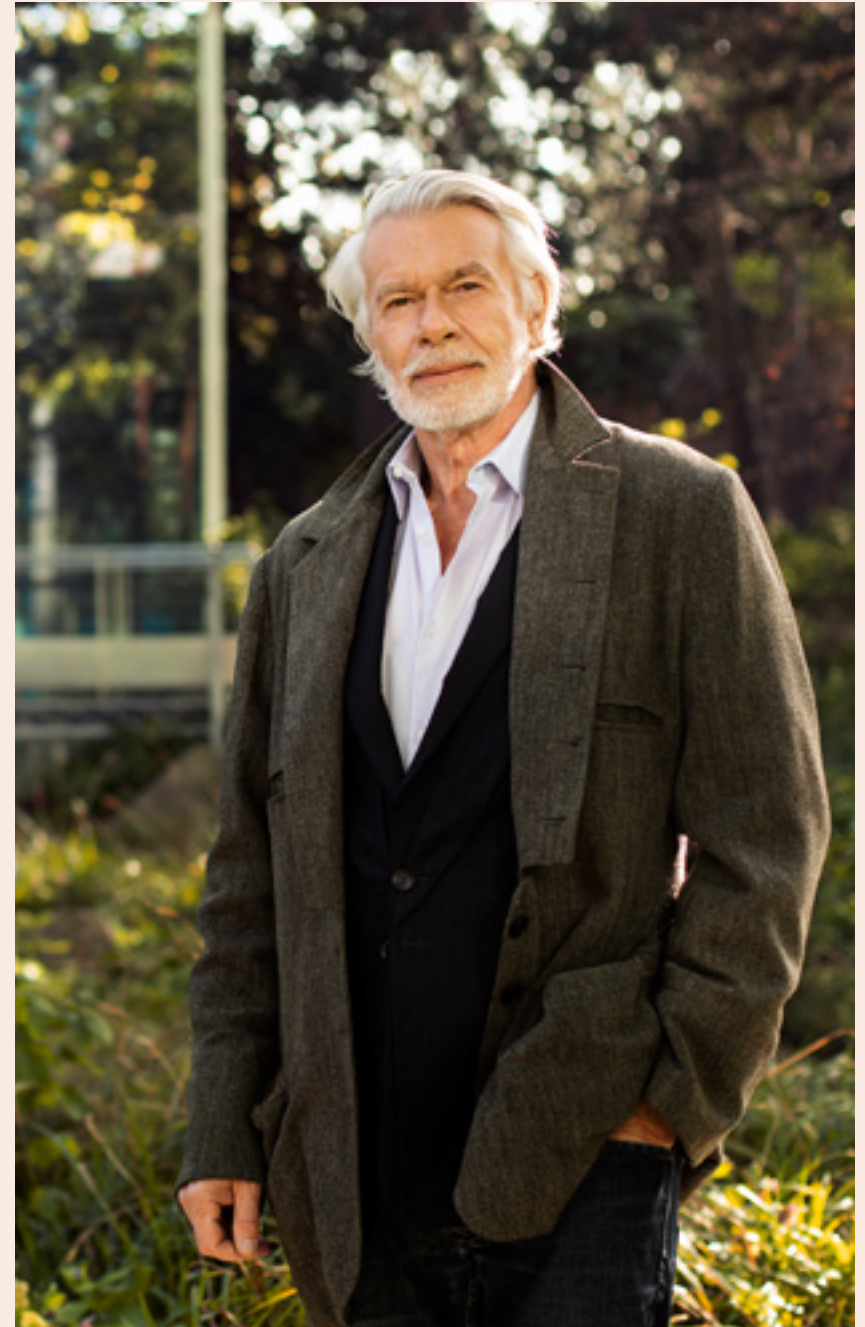


Photo by Thibault Voisin, 2023

# Print Theme 2025

## *TLmag 41: The Art of Collecting*

Guest editor: Simon de Pury

Release date: January 2026

Simon de Pury is a renowned art auctioneer, curator, collector, and leading figure in the global art market. Often referred to as the ‘rock star of the auction world,’ he is celebrated for his passionate advocacy of contemporary art and design. Formerly Chairman and Chief Auctioneer of Phillips de Pury & Company, he has played a pivotal role in shaping international collecting trends through his visionary curation, sharp eye for emerging talent, and energetic public presence. As guest editor of *TLmag 41 – The Art of Collecting / Collecting Art*, Simon de Pury brings his unique insight into the emotional, cultural, and aesthetic dimensions of collecting across disciplines.

*Collecting is one of the earliest instincts we are born with. As a young boy, I was obsessed with collecting miniature cars. My youngest daughter, now a teenager, has gone through several such phases. From the age of 6 to 10, she collected dolls – mostly Barbies. During Covid, she started buying digital clothes for the avatar she played with in the online game Roblox. This led the way to the acquisition of crystals and exotic stones, which began to accumulate rapidly. As we approach adulthood, this urge to collect can often diminish or disappear. However, it only takes one step for it to be rekindled and for us to succumb forever to the most beautiful but totally incurable disease.*

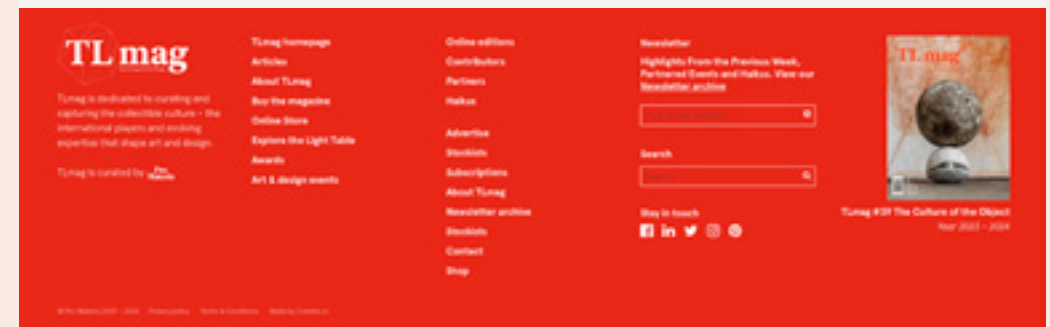
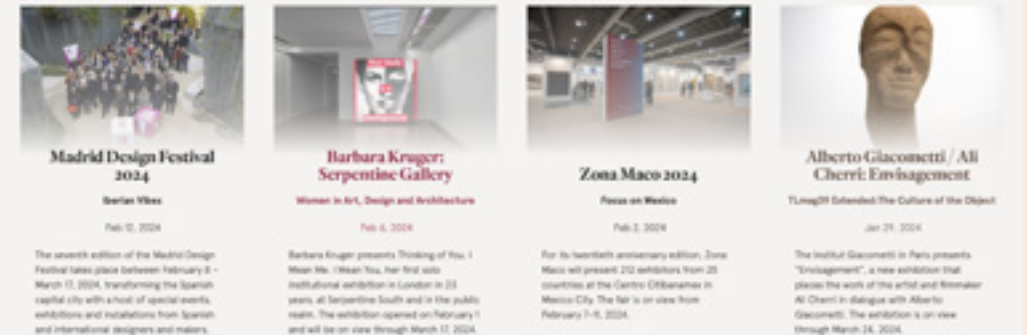
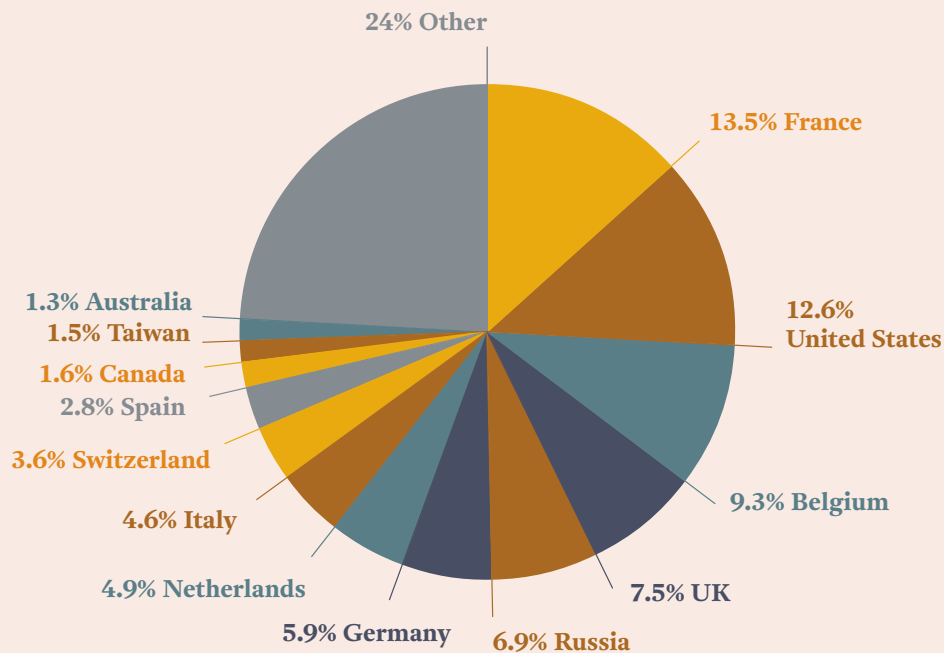
*I discovered my passion for art as a teenager. In my early twenties I was overjoyed to be able to work for Sotheby's and be surrounded by art on a daily basis. It was in my mid-30s that I felt the urge to buy a work by the Russian artist Erik Bulatov. It cost 35,000 Swiss francs and I had no idea how I was going to pay for it. I was on a very modest salary at Sotheby's and I already had four children. Fortunately, their mother was very understanding and we managed to pay the bill in instalments. I was hooked and from that moment on I put every penny I ever had into art.*



# TLmag Online Magazine

*TLmag Online* is a visually dynamic platform for the art and design world featuring previews and reviews about current exhibitions, new projects and collaborations, book or product launches, as well as interviews with important curators, directors and creatives. Through our ongoing Online Editions and Media Partnerships, *TLmag Online* includes the latest news in art and design fairs around Europe and beyond. With 2-3 posts per week as well as relevant social media content, *TLmag Online* remains current and thoughtful, and an important voice in the design and art media world. Visitors are able to order the latest print and digital issues or subscribe. In addition, they are able to explore the Gallery Online Store, featuring the various pieces and editions available at the gallery and studiolo in Brussels.

**Monthly Visits : + 30.000, Yearly Visits: 360.000**



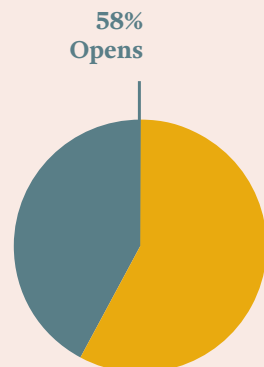
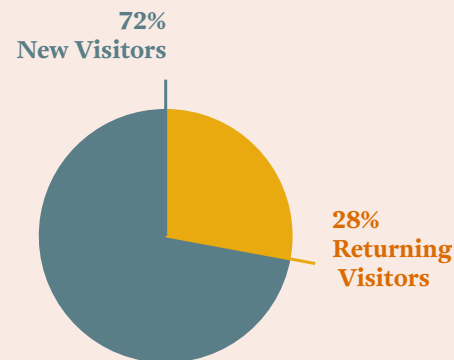
# Newsletters & Social Media

TLmag sends out Monthly Digest newsletters, featuring top web and social media content. TLmag also reserves space for commercial and cultural partnerships. Visitors can subscribe to our Monthly Digest newsletters online.

TLmag Monthly Digest +30.000 subscribers

Facebook: [facebook.com/TLmagazine](https://facebook.com/TLmagazine) +18K

Instagram: [@tlmag](https://www.instagram.com/tlmag) +16,6K



# Contributors

TLmag would be nothing without its network of talented contributors: journalists, editors, art directors and photographers. Together, they are instrumental in the curation of every new issue. TLmag contributors are essential resources in an ever-growing creative community – design-driven readers, creative professionals, designers and brands in search of precise, exceptional and unequalled creations.

## Among others:

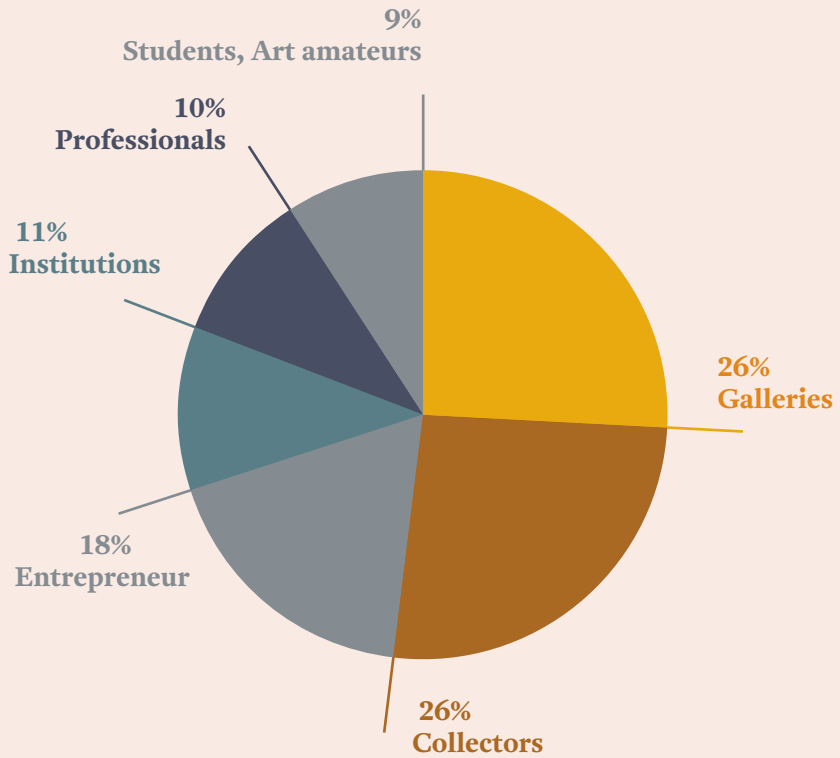
Adrian Madlener	Giulio Ridolfo	Oscar Duboř
Amy Hilton	Hans Ulrich Obrist	Oliver Basciano
Ananda Pellerin	Helen Jennings	Peter Novy
Angela Rui	Henriette Noermark	Petra Lafond
Anniina Koivu	Jacqueline Greaves	Rachel Morón
Baudouin Oosterlynk	Y-Jean Delsalle	Rebecca Lewin
Bas Smets	Kathelin Gray	Ringo Gomez
Cecile Poignant	Katrien Lichtert	Roberto Lopez Cervantes
Costanza Rinaldi	Lara Chapman	Rossella Locatelli
Christian Larsen	Marc Feustel	Sarah Schug
Danica Wilcox	Libby Sellers	Sibylle Grandchamp
Emanuele Quinz	Marie Ange Breyer	Sophie Whettnall
Eliseu Cavalcante	Marie Honnay	Stefano Salis
Formafantasma	Marco Sammiceli	Tracy Lynn Chemaly
Frederik Vercruysse	Martina Björn Mechteld	Vincent Fournier
Giovanna Massoni	Jungerius	Yasmine Dainelli
Glenn Adamson	Melanie Huchet	



View more contributors on [tlmagazine.com](http://tlmagazine.com)

# Readers

TLmag attracts a vast international audience – from a French, Belgian and international vantage-point – tapping a rich community of contributing editors, journalists, photographers, art directors, groups urban and culturally engaged readers. As both an informative and inspirational resource, TLmag is appreciated by professional creatives, collectors, gallerists, influential taste makers, active trend watchers but also aspiring creatives and students.



# TLmag Special Editions

TLmag Special Editions are spotlighting creatives and/or brands. Printed in custom batches and distributed at specific events and/or venues, the content from TLmag Special Editions can often be woven into articles for the Online Magazine and annual print issue. TLmag continuously reviews and accepts potential publication and exhibition proposals. Past Special edition projects have included Glass is Tomorrow, Nasza Polska, TLmag Istanbul, Norwegian Crafts, Cassina Authentic Icons, Atomium Intersections, Sèvres Cité de la Céramique, Stellar Works, NEARCH on Archæology and Contemporary Art, Studio MVW Shanghai...

## Special Editions Rates

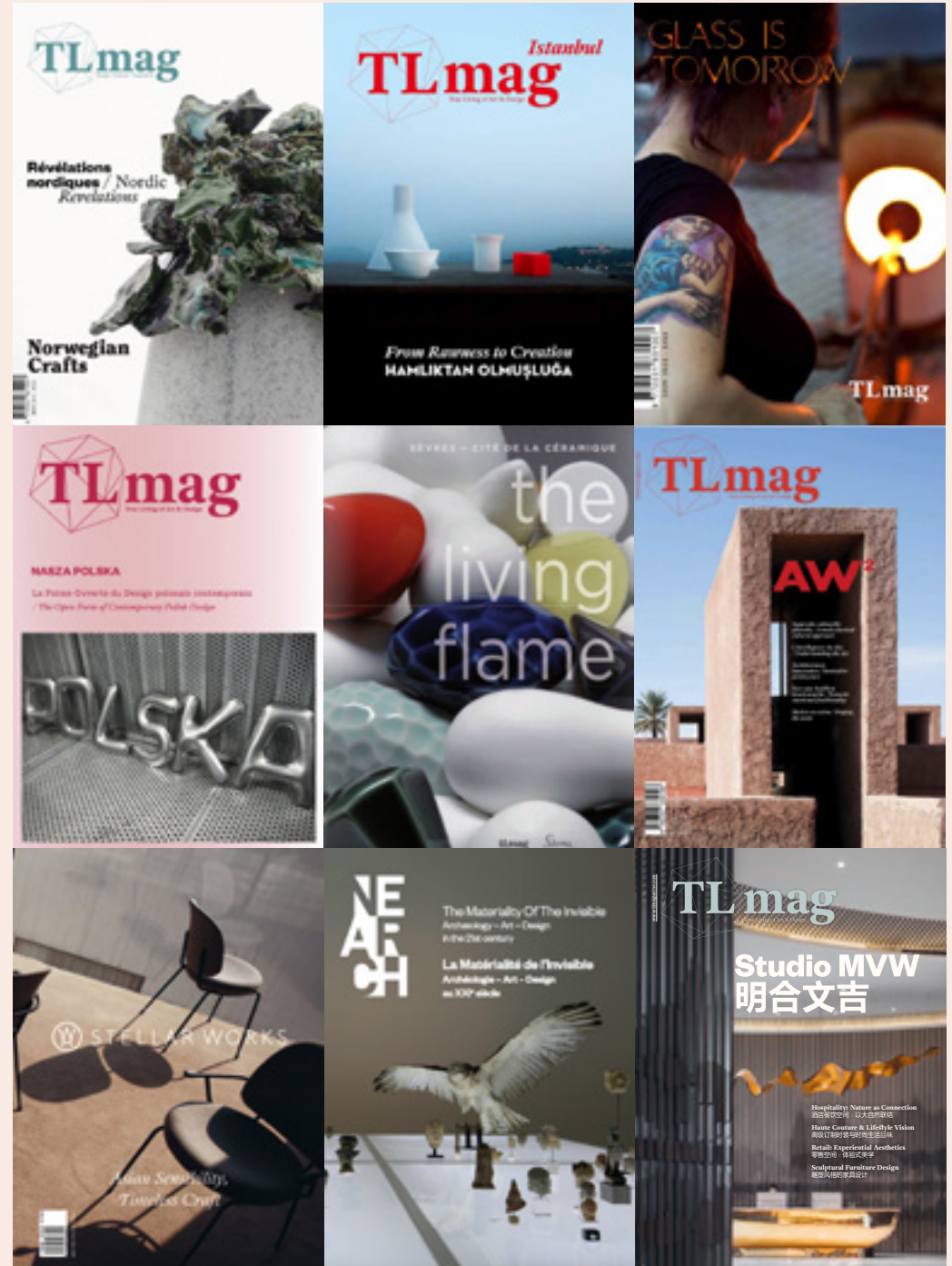
20 pages: 10.000€

32 pages: 15.000€

48 pages: 18.000€

64 pages: 22.000€

96 pages: 30.000€



# Talks & Launch Events

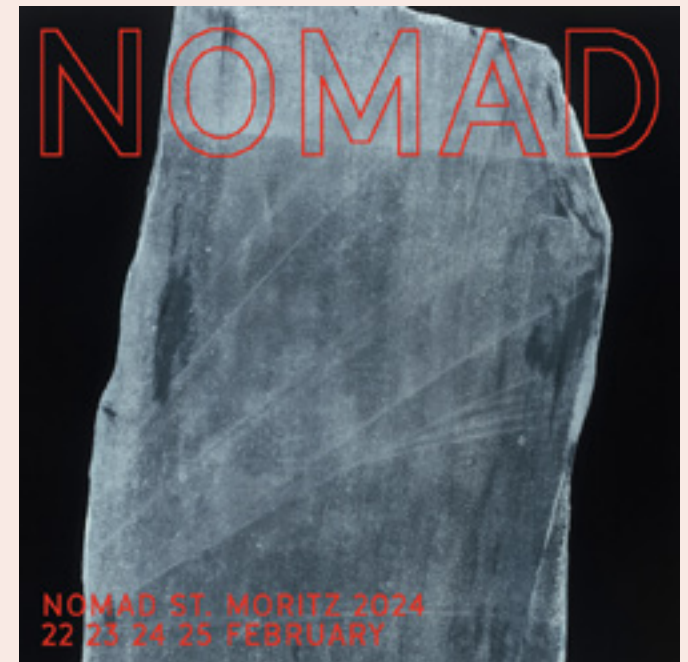
*NOMAD St. Moritz and TLmag 15th Anniversary Event*

Feb 23, 2024

Hotel Eden St. Moritz, Via Veglia, Saint Moritz, Switzerland

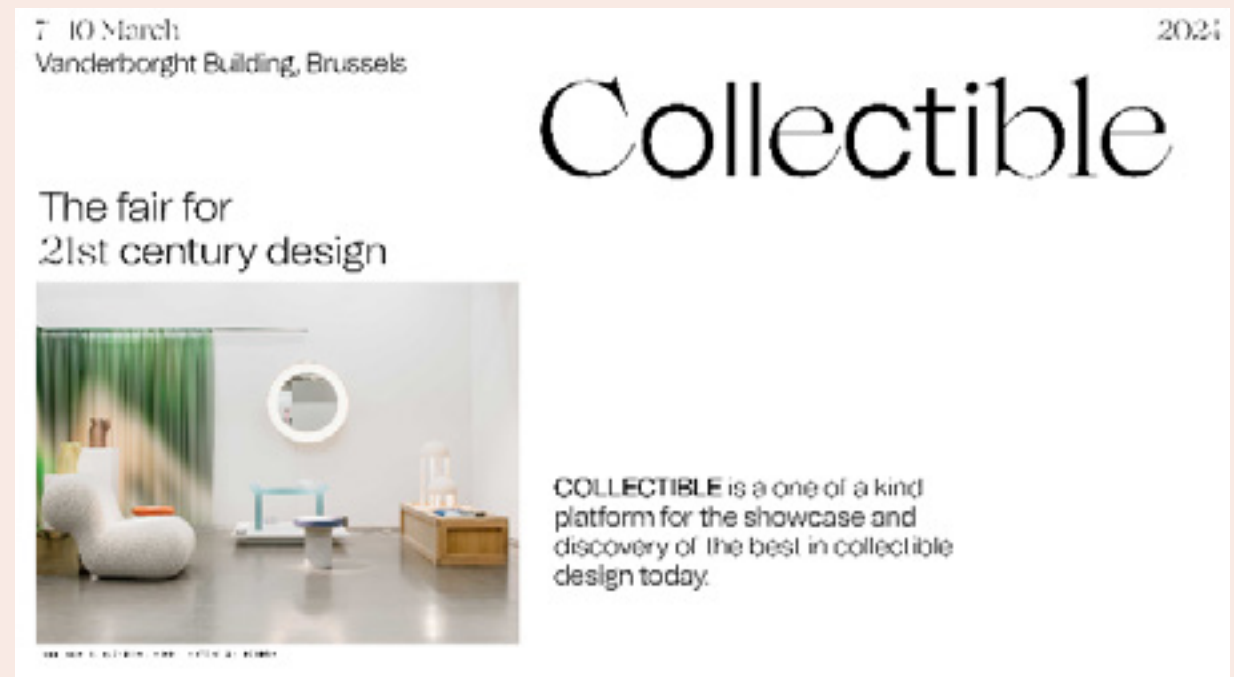
TLmag 15th Anniversary

NOMAD St Moritz & Spazio Nobile Gallery 23.2.2024



# Talks & Launch Events

NOMAD St Moritz, *Snowfield (Nevai)* Group Exhibition,  
Ex Hotel Eden, Switzerland  
Collectible, *Good Luck! New Experiments* Group  
Exhibition, Vanderborcht Building, Brussels



# Talks & Launch Events

*TLmag 36 – Tout est Paysage / All is Landscape*  
Spazio, Milan 11.12.22

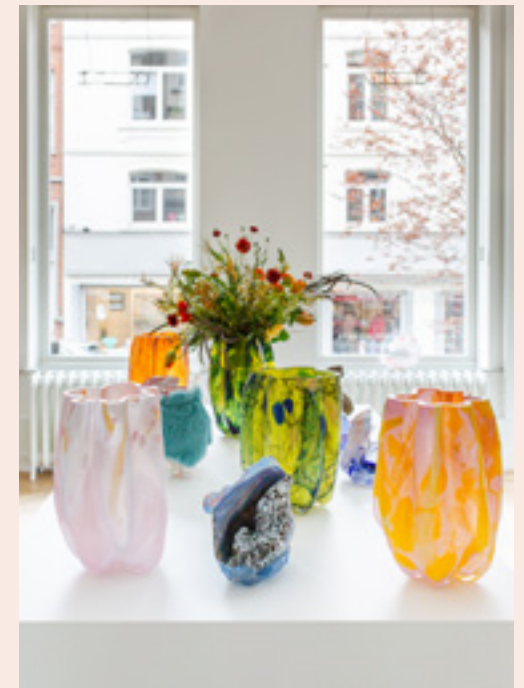
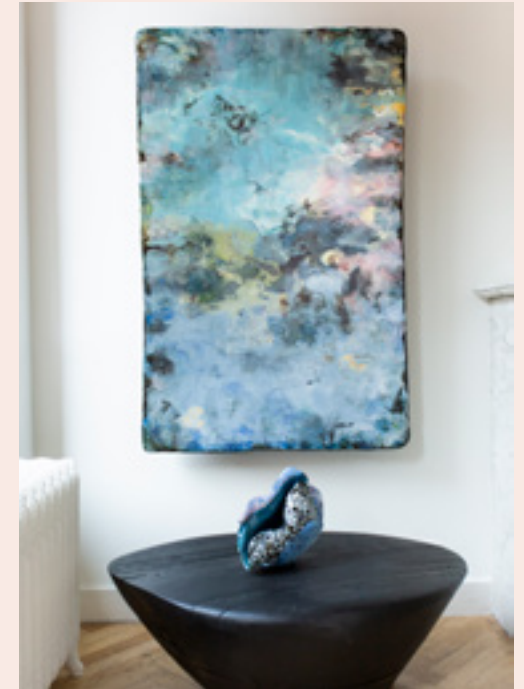


# Spazio Nobile Gallery

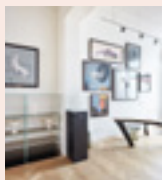
Spazio Nobile is a contemporary art and design gallery in Brussels, Belgium, known for its bold exhibitions and commitment to promoting innovative, boundary-pushing work. The gallery presents a range of emerging and established artists and designers from around the world, providing a platform for experimental practices and new creative directions in both fine art and collectable design. When art historians Lise Coirier and Gian Giuseppe Simeone founded Spazio Nobile in 2016, they combined their passions for design and art history to establish a fruitful dialogue with applied art, design and photography. Without boundaries between disciplines, they have created a collection of unique art and design pieces, limited editions and installations, with a particular sensitivity to nature and minerality. The gallery also publishes *TLmag\_True Living of Art & Design*, launched in 2008, an annual international print and online magazine dedicated to curating and capturing the culture of collecting. *TLmag* has evolved over 15 years with creative influencers, collectors, curators, artists, designers and architects who have shaped the contemporary art and design scene. The magazine and artist monographs are published by *Spazio Nobile Editions*. Spazio Nobile Studiolo, a permanent showcase in front of the main gallery, has been curated by the gallery since 2020. The co-founders have also extended the gallery experience to their private villa in Tervuren, on the outskirts of Brussels, with Spazio Nobile At Home, and in Sweden, at *25 Columns*, built by OFFICE Kersten Geers David Van Severen, overlooking Lake Siljan from the heights of Plintsberg, Dalarna.

Spazio Nobile Gallery & Studiolo  
Rue Franz Merjay 142 & 169,  
Brussels, Belgium

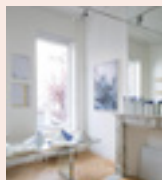
[www.spazionobile.com](http://www.spazionobile.com)  
[@spazionobilegallery](https://www.instagram.com/spazionobilegallery)



# Art & Design Exhibitions 2016–2024



Season I  
20.4 – 11.9.2016  
*Post Natural History*



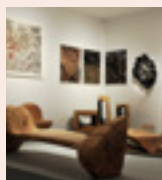
Season VI  
29.9.2017 – 4.2.2018  
*Blaauw. Ceci n'est pas une couleur,*  
Piet Stockmans & Frederik Vercruysse



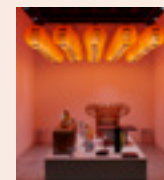
Season VIII  
24.5 – 9.9.2018  
*Meisenthal*  
*L'Âge du Verre/ The Age of Glass*



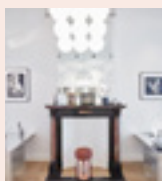
Season II  
15.9 – 20.11.2016  
*Forest of Lights*  
Group exhibition with, Jörg Bräuer,  
Kaspar Hamacher, Nathalie Dewez



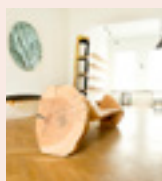
Art Elysées  
23 – 27.10. 2017  
*Art & Design*



Design Miami/Basel (CH)  
12 – 17.6. 2018  
*A New Layer Taiwan*



Season III  
25.11.2016 – 19.2.2017  
*Silver Edition*



Season VII  
9.2 – 16.5.2018  
*Die Werkstatt*  
Damien Gernay, Kaspar Hamacher,  
Jonas Loellmann, Valentin Loellmann  
Fabian von Spreckelsen



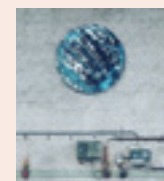
Season IX  
14.9 – 18.11.2018  
*Botanic Psyche*  
Marlène Huissoud & Marcin Rusak



Season IV  
23.11.2017 – 15.4.2017  
*Crystallized*  
Group exhibition with, Chen Chen &  
Kai Williams, Marie Dessuant & Philip  
Bone, Studio GGSV, Taeg Nishimoto,  
Marlène Huissoud, Tom Joyce,  
Antonio Lampecco, Richu Lacquer  
Art Co, Isaac Monté, Frederick Vidal,  
Philipp Weber, Tomáš Libertíny



Collect, Saatchi Gallery (UK)  
22 – 25.2.2018  
*Into The Stockmans Blue*



Kanal-Centre Pompidou  
12.9 – 4.11.2018  
*Between Art & Design. The Belgian Scene*  
with Piet Stockmans, Damien Gernay,  
Kaspar Hamacher



Collectible, Vanderborcht (BE)  
7 – 11.3.2018  
*Phantasmagoria*  
Group show with Laetitia Bica,  
Chen & Williams, Alexia de Ville,  
Kaspar Hamacher, Isaac Monté, Kustaa  
Saksi, Bela Silva, Frederik Vercruysse



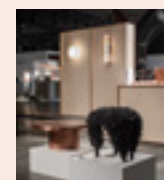
Art On Paper, Bozar (BE)  
6 – 9.9.2018  
*Dream Stones*  
Amy Hilton



Season V  
20.4.2017 – 23.7.2017  
*Chronosophia*  
Tomáš Libertíny



Art Brussels, Tour & Taxis (BE)  
19 – 22.2018  
*The Random Collection*  
Group exhibition



Interieur Biennial, Xpo Kortrijk  
18 – 22.10.2018  
*The Random Collection*

SPAZIO  
— NOBILE

*Contemporary Applied Arts, Design & Photography*

# Art & Design Exhibitions 2016–2024



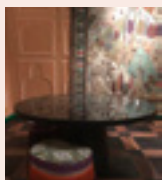
Season X  
23.11.2018 – 17.2.2019  
*Land/Scapes*  
Group exhibition with Carine Boxy,  
Kaspar Hamacher, François Moret,  
Bela Silva and Piet Stockmans



Season XII  
17.5 – 15.7.2019  
Kustaa Saksi  
*First Symptoms*



Spazio Nobile & Ancienne Nonciature  
3.3 – 15.10.2020  
*Le Sacre de la Matière*  
Jörg Bräuer, Sébastien Caporusso,  
Anne Derasse, Kaspar Hamacher, Silvano  
Magnone & Fabian von Spreckelsen



IIDE, Hôtel de la Poste (BE)  
17 – 25.11.2018  
IIDE, The International Interior  
Design Exhibition



Révelations, Grand Palais (FR)  
22 – 26 May 2019  
*Keep Your Garden Alive*  
Group exhibition



Collectible, Vandenborgh, (BE)  
5 – 8.3.2020  
*Ikebana*  
Group exhibition



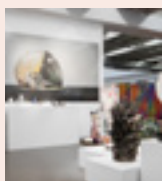
9 December 2018  
*TLmag Africas with Spazio Nobile*  
featuring Olaw-Dele Kuku  
and Aimé Mpane  
Private House, Tervuren,  
with the AfricaMuseum



Institut Finlandais (FR)  
23.5 – 13.7.2019  
*Keep Your Garden Alive*  
Group exhibition



Season XIV  
13.3 – 23.8.2020  
*Despierta Corazón Dormido*  
Bela Silva



Collectible, Vanderborgh, (BE)  
14 – 17.3. 2019  
*Blooming Blossom*  
Group exhibition



Season XII  
5 – 8.9.2019  
*Subtles Bodies*  
Laura Laine  
Brussels Gallery Weekend



Season XV  
4.9 – 8.11.2020  
*Les ignorants*  
Lionel Jadot & Serge Leblon, Duo show



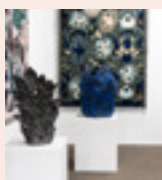
Season XI  
21.3 – 16.5.2019  
*Formosa:*  
*A New Layer Taiwan meets Yü*



Season XII  
20.9 – 21.12.2019  
*The Finnish Season*  
*Keep Your Garden Alive*



Season XVI  
12.11 – 14.3.2021  
*The New Age of Humanism*  
Group exhibition



Art Brussels, Tour & Taxis (BE)  
25 – 28.9.2019  
Kustaa Saksi  
Bela Silva



Season XIII  
9.1 – 8.3.2020  
*Insel der Zeit, solo show*  
Jörg Bräuer

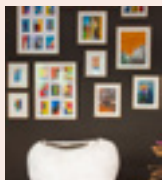


Season XVII  
18.3 – 18.7.2021  
*Threads  
of Nature*  
Group exhibition

SPAZIO  
— NOBILE

*Contemporary Applied Arts, Design & Photography*

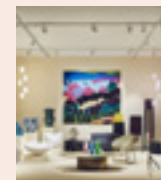
# Art & Design Exhibitions 2016–2024



Spazio Nobile Studiolo  
18.3 – 18.7.2021  
*Through the lookingglass,*  
Audrey Guttman



Luxembourg Art Week  
11-14.11.2021  
*Entre deux feux, sois celui qui éclaire,*  
Group exhibition



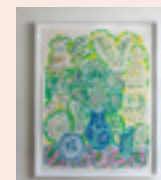
Season XII  
05.04 — 10.04.2022  
PAD Paris 2022  
*Contemplative Tactility /*  
*Tactilités contemplatives*



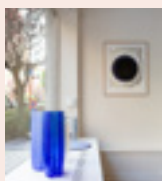
Season XVIII  
10.9 – 14.11.2021  
*Windows,*  
Frederik Vercruysse



Season XIX  
19.11 – 16.1.2022  
*Le Rameau de verre: la nature d'un souffle*  
François Azambourg



Brussels Art Square  
24.03 — 27.03.2022  
BAS – Brussels Art Square  
*Spazio Nobile & Bela Silva*



Spazio Nobile Studiolo  
10.9 – 14.11.2021  
*Encres bleues,*  
Tomáš Libertíny



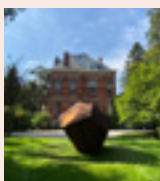
Spazio Nobile Studiolo  
19.11 – 16.1.2022  
*Feu de Joie,*  
Kaspar Hamacher & Jo Magrean



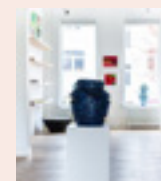
Collectible Design Fair  
20.05 — 22.05.2022  
Collectible 2022  
*Earth, Glass & Fire*



Art On Paper, Bozar (BE)  
15-19.9.2021  
*Another Way to Draw,*  
Eva Le Roi  
Pao Hui Kao



Tervuren  
27.11 – 30.1.2021  
*Spazio Nobile At Home*  
Group exhibition with a selection  
of the artists of the gallery



Season XXI  
01.04 — 15.05.2022  
Bela Silva & Vera Vermeersch,  
duo show  
*Arbre de Vie / Tree of Life*



Spazio Nobile & Ancienne Nonciature  
9.9-3.10.2021  
*Le Sacre de la Matière,*  
in collaboration with l'Ancienne  
Nonciature, Group exhibition with Jörg  
Bräuer, Anne Derasse, Ernst Gamperl,  
Kaspar Hamacher, Amy Hilton, Silvano  
Magnone, Élise Péroi, Paivi Rintaniemi,  
Bela Silva, Fabian von Spreckelsen



Spazio Nobile Studiolo  
21.01 — 27.03.2022  
Winter Selection – Group Show  
*Mimosa*



Spazio Nobile Studiolo  
22.05 — 04.09.2022  
Spazio Nobile & Cor Unum  
*Le Quattro Stagioni di Tom*



Season XX  
21.01 — 27.03.2022  
Éva Garcia, Solo Show  
*Cette lumière peut-elle*



Season XXII  
17.05 — 04.09.2022  
Kiki van Eijk  
& Joost van  
Bleiswijk,  
Duo show  
*Serendipity*

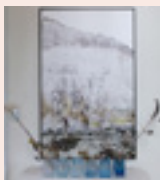
SPAZIO  
— NOBILE

*Contemporary Applied Arts, Design & Photography*

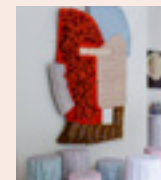
# Art & Design Exhibitions 2016–2024



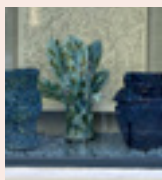
NOMAD Capri  
6.07 — 10.07.2023  
NOMAD  
*M'Illumino d'immenso, Group Exhibition*



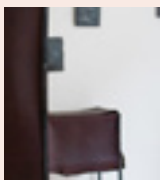
Tervuren  
11.12 — 22.01.2023  
*Living Ikebanas*



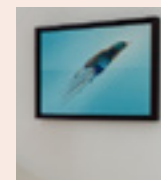
Spazio Nobile Studiolo  
28.04 — 03.09.2023  
Group Exhibition  
*Interlude II*



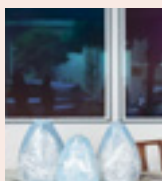
Brussels Art Square  
22.09 — 25.09.2022  
Spazio Nobile & Bela Silva



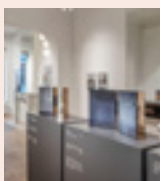
Spazio Nobile Studiolo  
10.9 — 14.11.2021  
Fabian von Spreckelsen, Solo Show  
*Soul Memories*



Season XXVI  
28.04 — 03.09.2023  
Vincent Fournier  
Solo Show,  
*Super Specimens:  
Sensations of the Extraordinary*



Spazio Nobile Studiolo  
09.09 — 06.11.2022  
Group Exhibition  
*Geology Of Being*



Season XXIV  
18.11 — 01.03.2023  
Jörg Bräuer,  
Solo Show  
*Lithologie*



Spazio Nobile at Home  
17.06 — 03.09.2023  
Group Exhibition,  
*Plein Air*



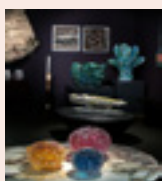
Season XXIII  
09.09 — 06.11.2022  
Amy Hilton, Solo Show  
*Subtle Energy*



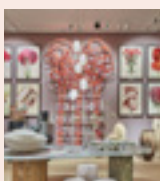
Spazio Nobile Season XXV  
& Spazio Nobile Studiolo  
10.03 — 24.04.2023  
Group Show  
*Interlude*



Season XXVII  
08.09 — 09.11.2023  
Ann Beate Tempelhaug,  
*Nord*



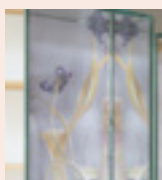
PAD London  
10.10 — 16.10.2022  
Group exhibition  
*The Painterly*



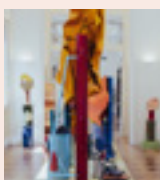
PAD Paris  
29.03 — 02.04.2023  
*Jardin des Songes*



Season XXVIII  
24.11.2023 — 17.3.2024  
Pao Hui Kao  
*25 Seasons*



Luxembourg Art Week  
10.11 — 13.11.2022  
*Anima*



Masterly Milano  
17.04 — 23.04.2023  
Kiki van Eijk & Joost van Bleiswijk  
*A Forest of Collision & Raku*



Ceramic Brussels, Tour & Taxis  
Group Show  
*Living With  
Flame*  
24.1 — 28.1.2024

SPAZIO  
— NOBILE

*Contemporary Applied Arts, Design & Photography*

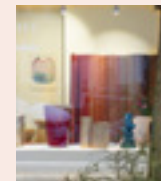
# Art & Design Exhibitions 2016–2024



Spazio Nobile At Home  
Lunar New Year Group Show  
*Dragon Eye*  
10.2 – 23.6.2024



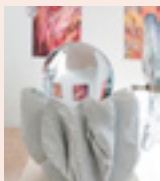
Spazio Nobile At Home  
Summer Group Show  
*Interior Nature*  
7.7 – 1.10.2024



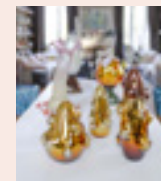
Spazio Nobile Studiolo  
Group Show  
*Asian Aesthetics*  
22.11.2024 – 19.1.2025



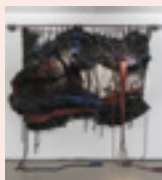
NOMAD St Moritz, Hôtel Eden  
Group Show  
*Snowfield – Nevai*  
22.2 – 25.2.2024



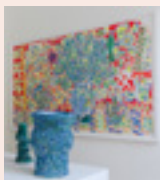
Spazio Nobile Studiolo  
Åsa Jungnelius & Märta Thisner,  
Duo Show  
*Mussels*  
12.9 – 17.11.2024



Spazio Nobile At Home  
Winter Group Show  
*Golden Hive*  
30.11.2024 – 10.3.2025



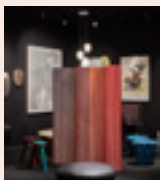
Collectible, Vanderborght  
Group Show  
*Good Luck! New Experiments*  
7.3 – 10.3.2024



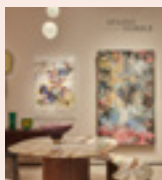
Season XXX – *Salon d'Automne*  
*Artists and Designers in Dialogue*  
Group Show  
19.9 – 17.11.24



Season XXIX – Åsa Jungnelius  
Solo Show  
*Desire Utensil Container*  
22.3 – 15.9.2024



PAD London, Berkeley Square  
Group Show  
*Spray the Colour*  
8.10 – 13.10.2024



PAD Paris, Les Tuileries  
Group Show  
*Primavera: A Window to the Soul*  
3.4 – 7.4.2024



Design Miami/Paris,  
Hôtel de Maisons  
Bela Silva, Solo Show  
*Jardim botânico*  
15.10 – 20.10.2024  
In collaboration with TF Urban



Design Miami/Basel, Messeplatz  
Pao Hui Kao & Ann Beate Tempelhaug  
Duo Show  
*LuniSolar*  
10.6 – 16.6.2024



Season XXXI – Florence Coenraets,  
Solo Show  
*Immersion*  
22.11.2024 – 19.1.2025

SPAZIO  
— NOBILE

*Contemporary Applied Arts, Design & Photography*

# Art & Design Exhibitions 2024

Spazio Nobile Gallery & Studiolo, rue Franz Merjay 142 – 169 Brussels

**Season XXVIII – Pao Hui Kao**

*25 Seasons*

24.11.2023 – 21.01.2024

**Ceramic Brussels, Tour & Taxis  
Group Show**

*Living With Flame*

24.1 – 28.1.2024

**Spazio Nobile At Home  
Lunar New Year Group Show**

*Dragon Eye*

10.2 – 23.6.2024

**NOMAD St Moritz, Hôtel Eden  
Group Show**

*Snowfield – Nevai*

22.2 – 25.2.2024

**Collectible, Vanderborght  
Group Show**

*Good Luck! New Experiments*

7.3 – 10.3.2024

**Season XXIX – Åsa Jungnelius  
Solo Show**

*Desire Utensil Container*

22.3 – 15.9.2024

**PAD Paris, Les Tuileries  
Group Show**

*Primavera: A Window to the Soul*

3.4 – 7.4.2024

**Design Miami/Basel, Messeplatz  
Pao Hui Kao & Ann Beate  
Tempelhaug Duo Show**

*LuniSolar*

10.6 – 16.6.2024

**Spazio Nobile At Home  
Summer Group Show**

*Interior Nature*

7.7 – 1.10.2024

**Spazio Nobile Studiolo  
Åsa Jungnelius & Märta Thisner,  
Duo Show**

*Mussels*

12.9 – 17.11.2024

**Season XXX – Group Show**

*Salon d'Automne:*

*Artists and Designers in Dialogue*

19.9 – 17.11.24

**PAD London, Berkeley Square  
Group Show**

*Spray the Colour*

8.10 – 13.10.2024

**Design Miami/Paris,  
Hôtel de Maisons  
Bela Silva, Solo Show**

*Jardim botânico*

15.10 – 20.10.2024

In collaboration with TF Urban

**Season XXXI – Florence Coenraets,  
Solo Show**

*Immersion*

22.11.2024 – 19.1.2025

**Spazio Nobile Studiolo  
Group Show**

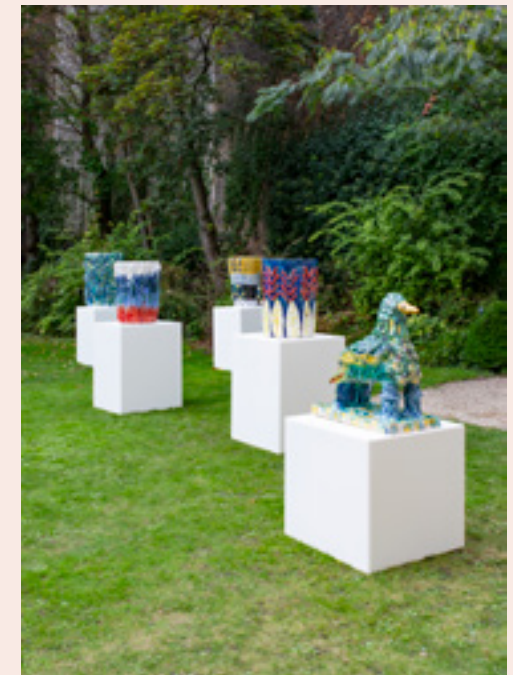
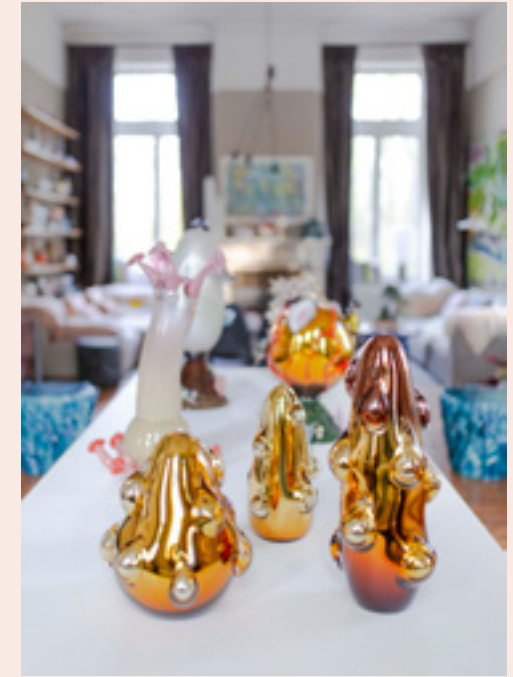
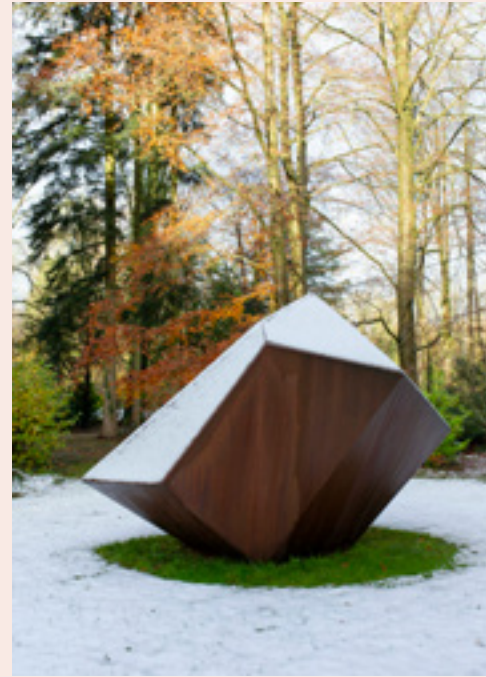
*Asian Aesthetics*

22.11.2024 – 19.1.2025

**Spazio Nobile At Home  
Winter Group Show**

*Golden Hive*

30.11.2024 – 10.3.2025



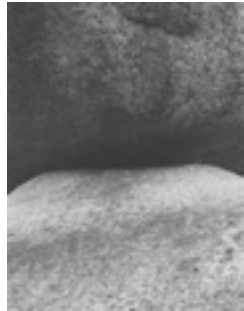
# Photographic Portfolios



# Photographic Portfolios



**Insel Hombroich**  
Pierres & Jardins / *Stones & Gardens*  
Text(s) & Photos par / by Marlène Rijn



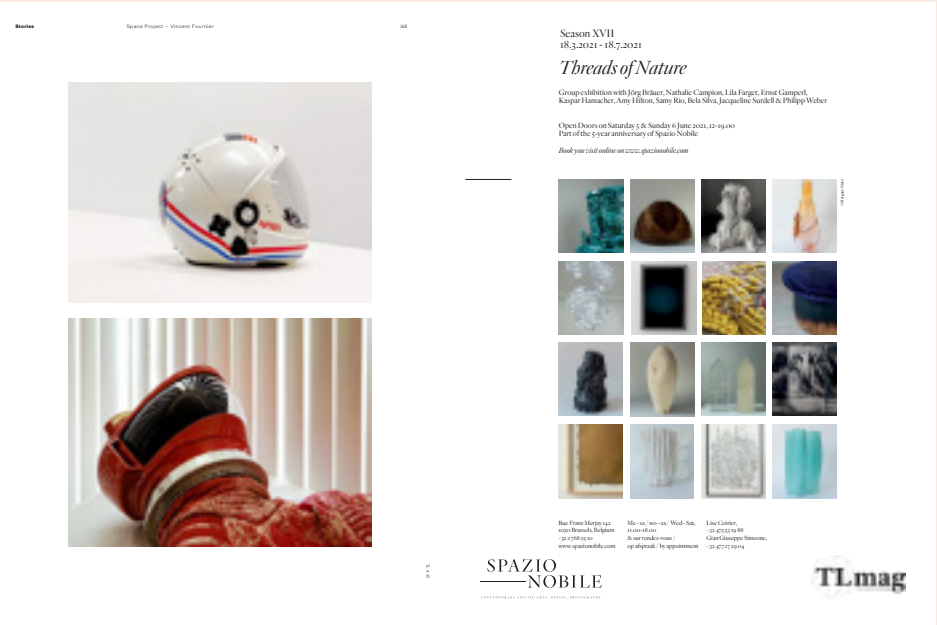
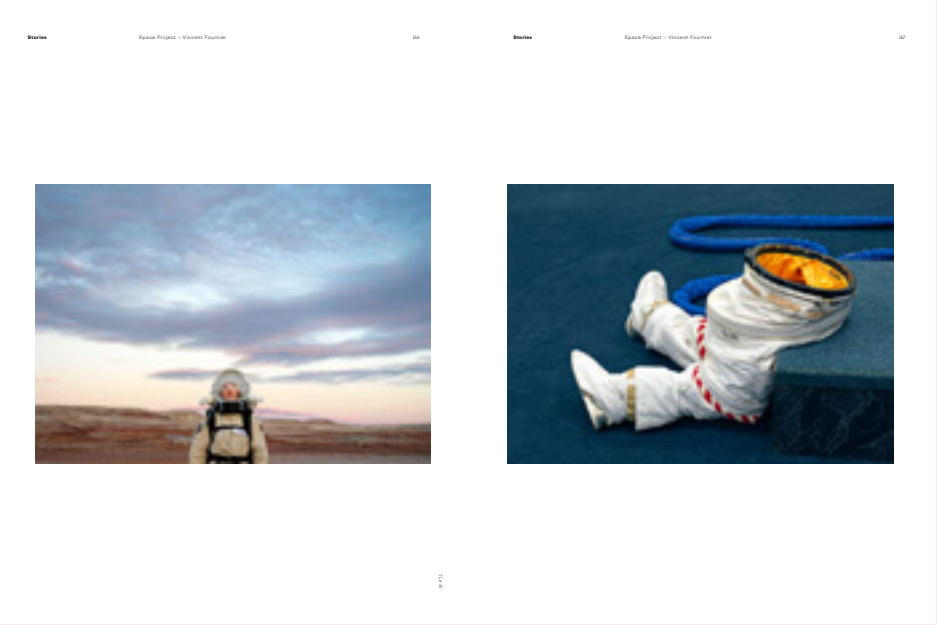
Isaak Hembrich est à la fois une fondation et un musée à Neuss, en Allemagne, qui a été créé à l'origine par le collectionneur Karl-Heinrich Müller.

Isaak Hembrich compte 21 hectares de paysages idylliques au sein desquels se trouvent dix pavillons qui jalonnent la promenade. C'est un espace où l'art et la nature sont subtilement liés l'un à l'autre, en parfaite symbiose.

Ces sculptures en pierre sont l'œuvre de l'artiste allemand Anselm Herzfeld.



# Photographic Portfolios



Photographic Portfolios



Eco-Warriors: Precy Numbi & Flory Sinanduku

Sébastien Van de Walle capture le puissant mouvement d'art performatif à Kinshasa, RDC / Sébastien Van de Walle Captures the Powerful Performance Art Movement in Kinshasa, DRC

Photographie de Sébastien Van de Walle / Photo by Sébastien Van de Walle

Mix & Match

Precy Numbi & Flory Sinanduku

226

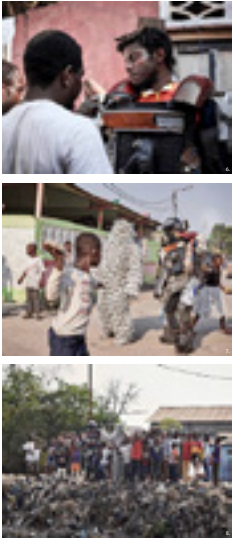


© S. V. W.

Mix & Match

Precy Numbi & Flory Sinanduku

227



1 — Performance de Precy Numbi dans les rues de Matonge Kinshasa / Performance by Precy Numbi in the streets of Matonge Kinshasa  
2 — Installation de Precy Numbi en Kinshasa dans les rues de Matonge / Installation Precy Numbi in Kinshasa in the streets of Matonge  
3 — Performance avec les enfants de Matonge / Performance with the children of Matonge  
4 — Photo de groupe avec les enfants qui ont participé à la séance / Group photo with the children who participated in the session

Autres pages illustrées / Other pages:  
5 — Flory Sinanduku après sa performance / Flory Sinanduku after his performance  
6 — Artiste nouvellement née de Kinshasa à la vie en solo / Newly born artist of Kinshasa to live on her own  
7 — Kinshala et l'homme-serpent / Kinshala and the serpent man

Mix & Match

Precy Numbi & Flory Sinanduku

228



Précis sur les effets de la pandémie à Kinshasa, un centre de photographes Sébastien Van de Walle a collaboré avec Precy Numbi, un artiste et militant local dont les œuvres visuelles ont documenté les conséquences de la pandémie sur la population des enfants qui peuplent la banlieue capitale Kinshasa. Precy Numbi a installé Kinshala, Van de Walle dans la quartier populaire de Matonge, au bord de la rivière Kikumba, où l'on trouve plus de trois millions de personnes. C'est dans cette décharge à ciel ouvert que l'artiste a installé un atelier de travail et a commencé à travailler avec les enfants de la région.

Il est, en effet, Sébastien Van de Walle, un photographe belge résident à Kinshasa, qui a collaboré avec Precy Numbi, un artiste et militant local dont les œuvres visuelles ont documenté les conséquences de la pandémie sur la population des enfants qui peuplent la banlieue capitale Kinshasa. Precy Numbi a installé Kinshala, Van de Walle dans la quartier populaire de Matonge, au bord de la rivière Kikumba, où l'on trouve plus de trois millions de personnes. C'est dans cette décharge à ciel ouvert que l'artiste a installé un atelier de travail et a commencé à travailler avec les enfants de la région.

Mix & Match

Precy Numbi & Flory Sinanduku

229



1 — Performance de Precy Numbi dans les rues de Matonge Kinshasa / Performance by Precy Numbi in the streets of Matonge Kinshasa  
2 — Installation de Precy Numbi en Kinshasa dans les rues de Matonge / Installation Precy Numbi in Kinshasa in the streets of Matonge  
3 — Performance avec les enfants de Matonge / Performance with the children of Matonge  
4 — Photo de groupe avec les enfants qui ont participé à la séance / Group photo with the children who participated in the session

Il est, en effet, Sébastien Van de Walle, un photographe belge résident à Kinshasa, qui a collaboré avec Precy Numbi, un artiste et militant local dont les œuvres visuelles ont documenté les conséquences de la pandémie sur la population des enfants qui peuplent la banlieue capitale Kinshasa. Precy Numbi a installé Kinshala, Van de Walle dans la quartier populaire de Matonge, au bord de la rivière Kikumba, où l'on trouve plus de trois millions de personnes. C'est dans cette décharge à ciel ouvert que l'artiste a installé un atelier de travail et a commencé à travailler avec les enfants de la région.

Il est, en effet, Sébastien Van de Walle, un photographe belge résident à Kinshasa, qui a collaboré avec Precy Numbi, un artiste et militant local dont les œuvres visuelles ont documenté les conséquences de la pandémie sur la population des enfants qui peuplent la banlieue capitale Kinshasa. Precy Numbi a installé Kinshala, Van de Walle dans la quartier populaire de Matonge, au bord de la rivière Kikumba, où l'on trouve plus de trois millions de personnes. C'est dans cette décharge à ciel ouvert que l'artiste a installé un atelier de travail et a commencé à travailler avec les enfants de la région.

Mix & Match

Precy Numbi & Flory Sinanduku

230



© S. V. W.

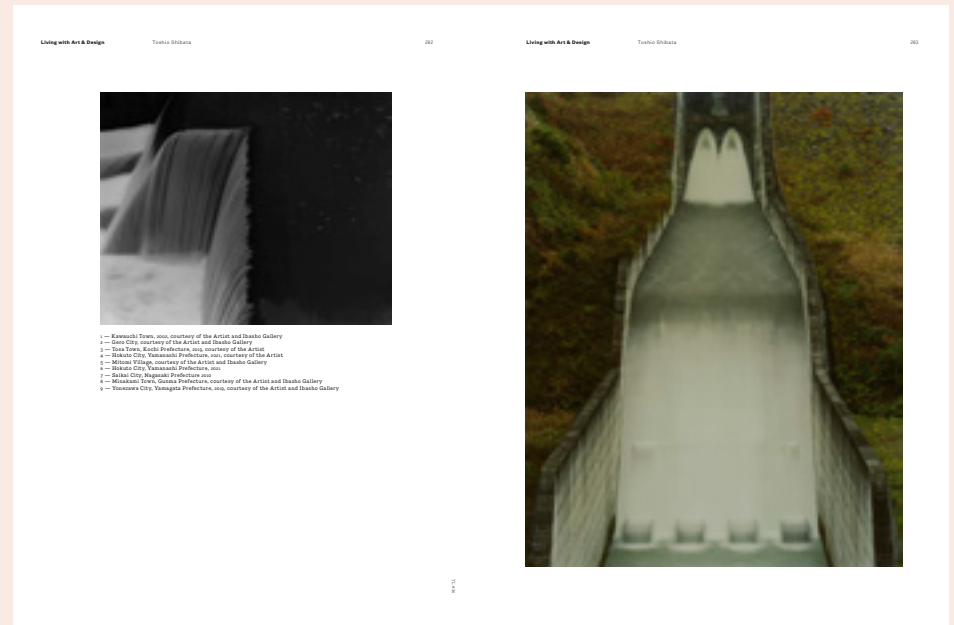
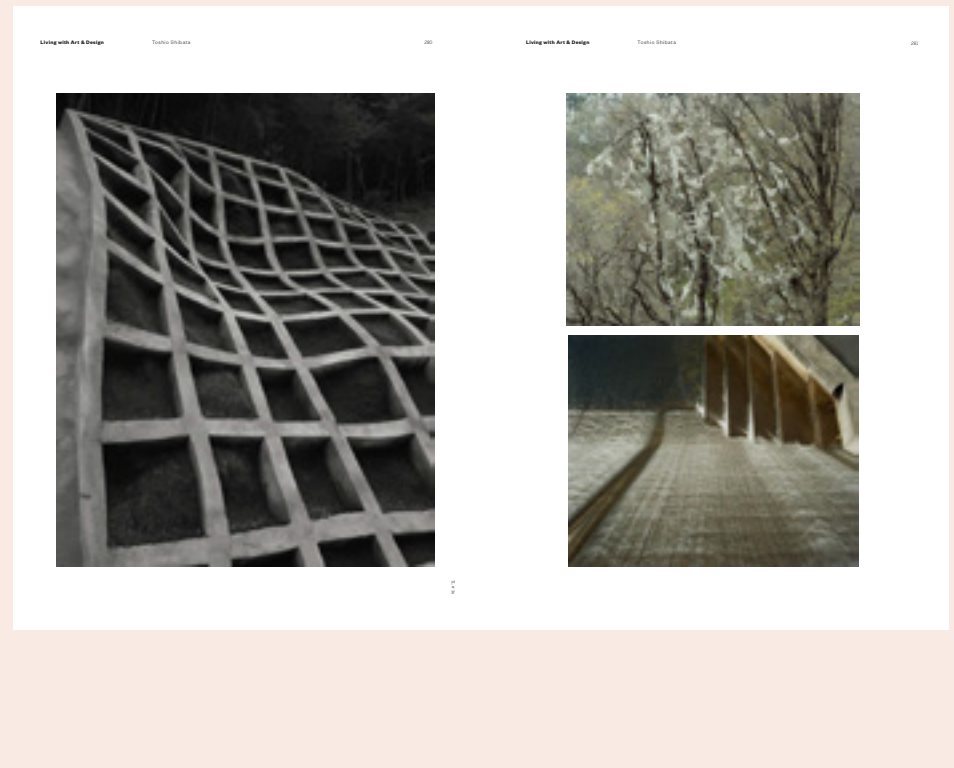
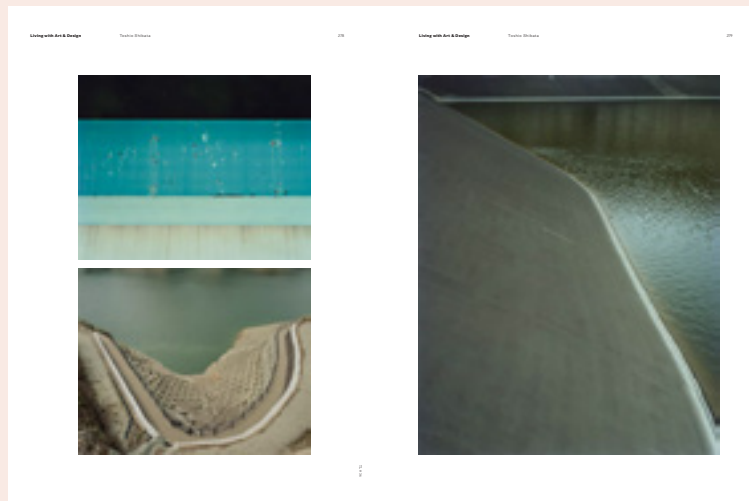
Mix & Match

Precy Numbi & Flory Sinanduku

231



# Photographic Portfolios



# Photographic Portfolios



**WALTER  
NIEDERMAYR**



Le pergélisol pérenne couvre environ 25 % de la surface de la Terre. Le sol dégelé laisse souvent librement, avec des conséquences dramatiques pour le climat et la Terre, le pergélisol est un sol gelé en permanence, présente dans les montagnes et les régions polaires qui reste constamment gelé pendant au moins deux années consécutives. D'innombrables quantités de dioxyde de carbone (CO<sub>2</sub>) sont stockées dans le pergélisol. Les scientifiques craignent que le dégel du pergélisol accélère le changement climatique en libérant du dioxyde de carbone (CO<sub>2</sub>) et du méthane (CH<sub>4</sub>). Ceux-ci agissent comme des gaz à effet de serre et intensifient le réchauffement de la planète. Selon les dernières estimations, le pergélisol, le carbone et le méthane présentes dans l'atmosphère constituent un point de basculement possible dans le système climatique mondial. Il y a deux ans, les Nations Unies ont lancé une initiative internationale pour étudier les deux menaces environnementales les plus sous-estimées.

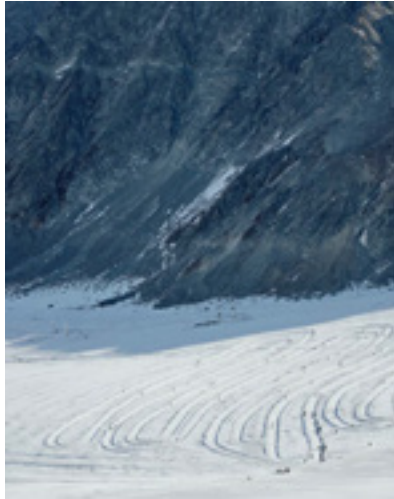
Permafrost regions occupy roughly 25 percent of the Earth's surface. The ground is thawing slowly but steadily with drastic consequences for the climate and the Earth. Permafrost is permanently frozen ground that occurs in the mountains and polar regions. It remains constantly frozen for at least two consecutive years. There are enormous quantities of carbon stored in permafrost. As permafrost, like ice, is a solvent, As permafrost thaws, it accelerates climate change by releasing trapped carbon dioxide (CO<sub>2</sub>) and methane (CH<sub>4</sub>). These act as greenhouse gases and intensify global warming. According to scientists, the amounts of carbon dioxide and methane constitute a possible tipping point in the global climate system. Two years ago, the U.S. and the Nations declared thawing permafrost to be one of the most underestimated environmental threats.



### Mix & Match

Walter Niedermayr

160



L. 0. 0.



242

[illegible][illegible]

Dans ce cas extrême, l'artiste imagine et conçoit un espace-image dans le cadre duquel les observateurs peuvent définir eux-mêmes leur point de vue. Différentes approches sont possibles, par exemple les approches de la phénoménologie, de la psychologie sociale, des questions esthétiques en rapport avec la conscience du paysage et de l'espace, la conscience de la nature, l'écologie, la réalité perceptuelle-théorique de l'œuvre d'art, la philosophie de l'art, la philosophie du regard à cet égard : il faut à chaque fois créer ses propres références dans ce cadre ambigu. À cet égard, l'auteur n'est pas, au premier abord, clairement approuvé. Mais il est évident que l'œuvre d'art est un verrou d'une prétendue réalité de l'œuvre. D'un côté, elle vise à révéler les mécanismes du processus, de l'autre, les exigences de la perception et la précision perceptive. Les œuvres abordent les problèmes de la conscience humaine et de la conscience fragile dans un espace ouvert, ainsi que les conditions sociales et politiques qui en découlent. ♦

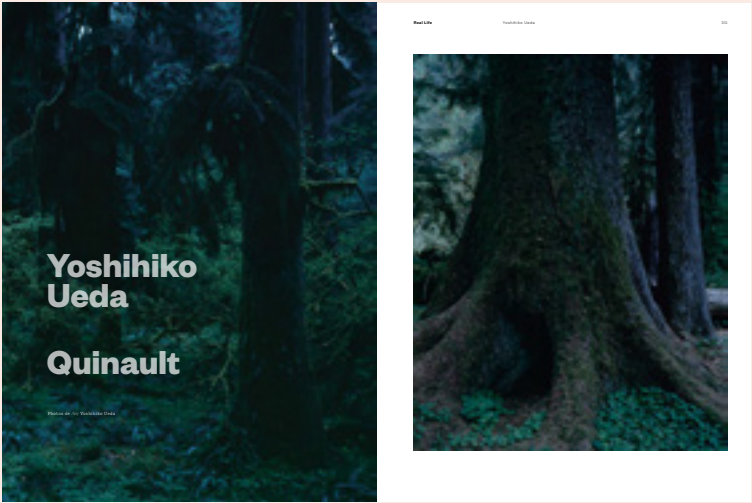
example landscape-specific, societal processes, aesthetic questions in connection with landscape and spatial consciousness, nature awareness, ecology, perceptual-theoretical image reality, and spatial reality. There is no prescribed way of viewing; each person can create his or her own references in the ambiguity. In this respect, the work is not, at first glance, clearly apparent, though it might seem to be. It oscillates between the veneer of a so-called reality and the reality of the image. On the one hand it is aimed at revealing the mechanisms of the medium, on the other at the demands of perception and perceptual precision. The works address social processes and show unstable, fragile systems in open space and the social and political conditions these give rise to. ♦

[walterriedermayr.com](http://walterriedermayr.com)

[walteriafermoyr.com](http://walteriafermoyr.com)

3 — *Drehhinnenbüchse* 38, 2001, courtesy of Galerie Nordenhake Berlin, Ncontemporary Milan  
4 — *Schnalstafelstecher* 39, 2001, courtesy of Galerie Nordenhake Berlin, Ncontemporary Milan  
5 — *Lech Riffing* 39, 2001, courtesy of Galerie Nordenhake Berlin, Ncontemporary Milan  
6 — *Stuhler Gletscher* 39, 2001, courtesy of Galerie Nordenhake Berlin, Ncontemporary Milan.

# Photographic Portfolios



Real Life

Yoshihiko Ueda

304

1 — Quinault, 1991, No.1, Washington, USA  
2 — Quinault, 1991, No.4, Washington, USA  
3 — Quinault, 1991, No.3, Washington, USA  
4 — Quinault, 1990, No.39, Washington, USA  
5 — Quinault, 1991, No.12, Washington, USA

**PORTRAITS OF TREES,  
THE BIRTH OF A NEW PHOTOGRAPHY**

“In the spring of 1991, I found myself traipsing through deep forests on the Olympic Peninsula of Washington State on the American West Coast, shouldering a large 8 x 10. It all started from taking a single image of a tree: I sensed a fleeting presence and instinctively pointed my camera, then what should emerge from the black box but an original photograph, something truly my own. I knew for certain it was a new beginning, without exaggeration, the birth of a new photography. I wasn’t just saying this, it was a new experience, a new sensation I was feeling. As if the tree had whispered to me, Look this way. A powerful commanding force had held me there in a trance. From then on until the final photograph, I took pains trying to repeat the experience, but no matter how I wandered about that same overriding power eluded me. Then at the very last, upon shooting my last tree photo, I knew, Enough, it’s time to leave the forest.

“I do believe I photographed the forest as a ‘force,’ something completely different from merely shooting scenery. Or to put it rather strangely, I seem to have been taking portraits of trees. A year later the book was published under the title Quinault, the Native American name for that wooded sanctum.”◆

Photographer/Professor of Department of Graphic Design, Tama Art University

Yoshihiko Ueda was born in 1957 in Hyogo Prefecture. Among his many awards are the Photographic Society of Japan Lifetime Achievement Award, the Tokyo Art Directors Club Grand Prize, and the New York Art Directors Club Photography Award. In 2011 he launched Gallery 916.

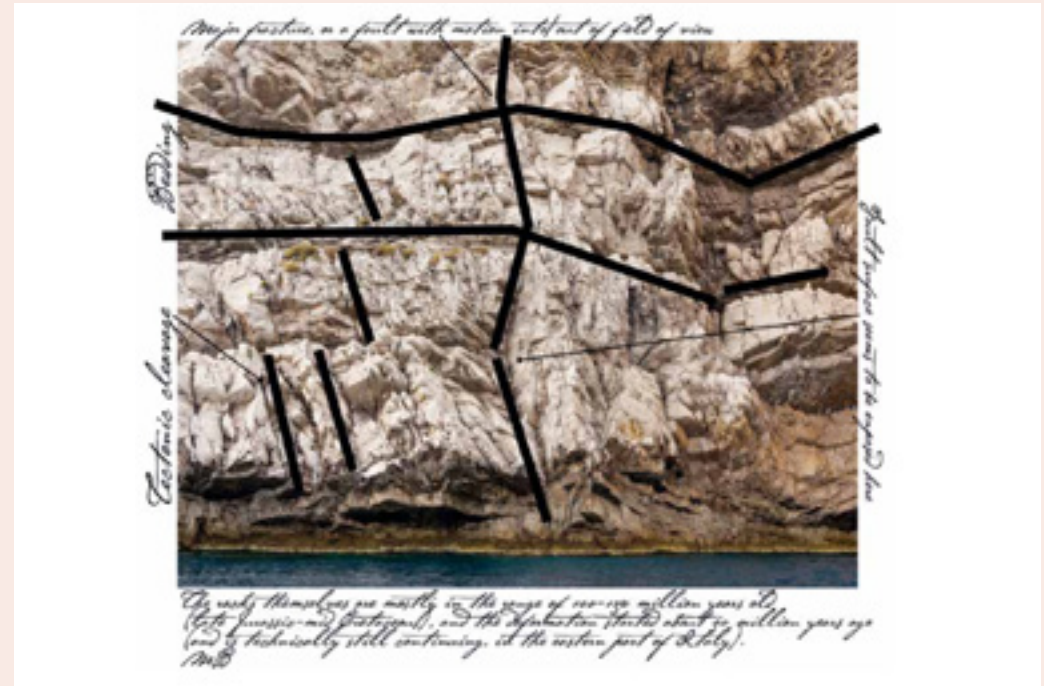
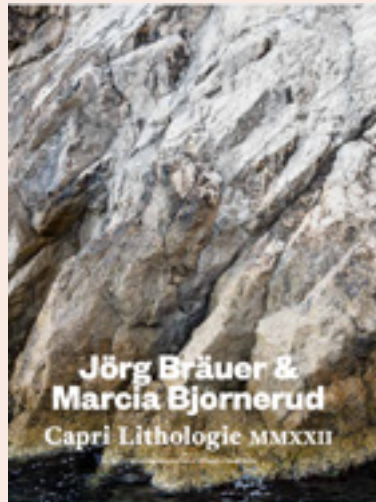
His most noted series/monographs include *QUINAULT*, a meditation on the eponymous sacred Native American rainforest; *AMAGATSU*, a backstage study of Sankai Juku dancer-choreographer Ushio Amagatsu; at Home, intimate snapshots of the artist’s family; *Materia*, capturing primeval sources of life; and *A Life with Camera*, a collection of works from his massive oeuvre spanning over 30 years.

Recently published are *FOREST: Impressions and Memories 1989-2017*, capturing the three primeval forests of Quinault, Yakushima, and Nara Kasuga Taisha shrines, and *66TH STREET*, a memory of light and shadow falling on a single sheet of white paper.

In 2019, he wrote, directed, and filmed the movie *A Garden of the Camellias*, the story of a woman who loses her husband and is confronted with the inheritance tax on her home, depicted through the changes of the seasons of a traditional Japanese house and its garden. Released in April 2021.

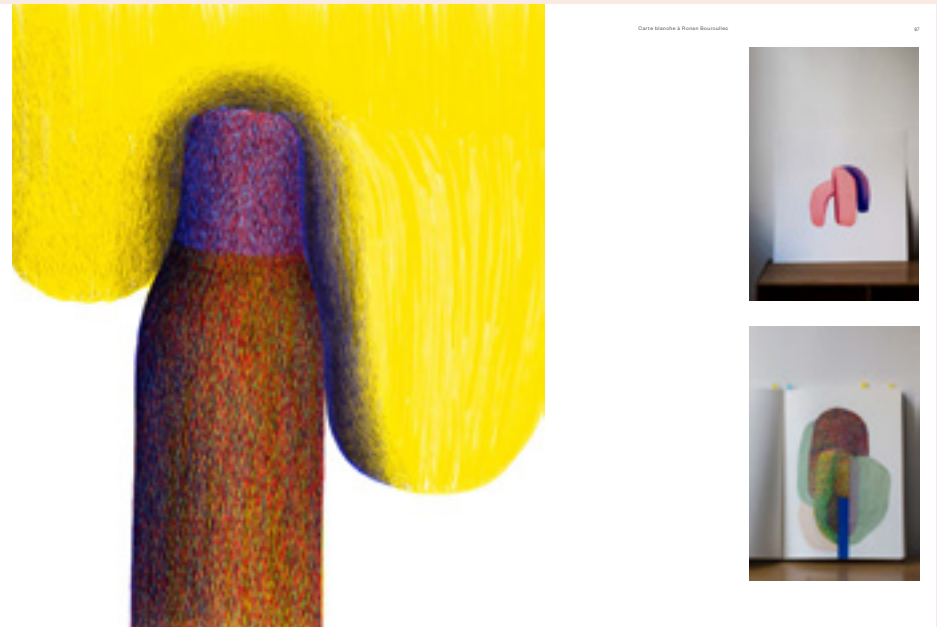
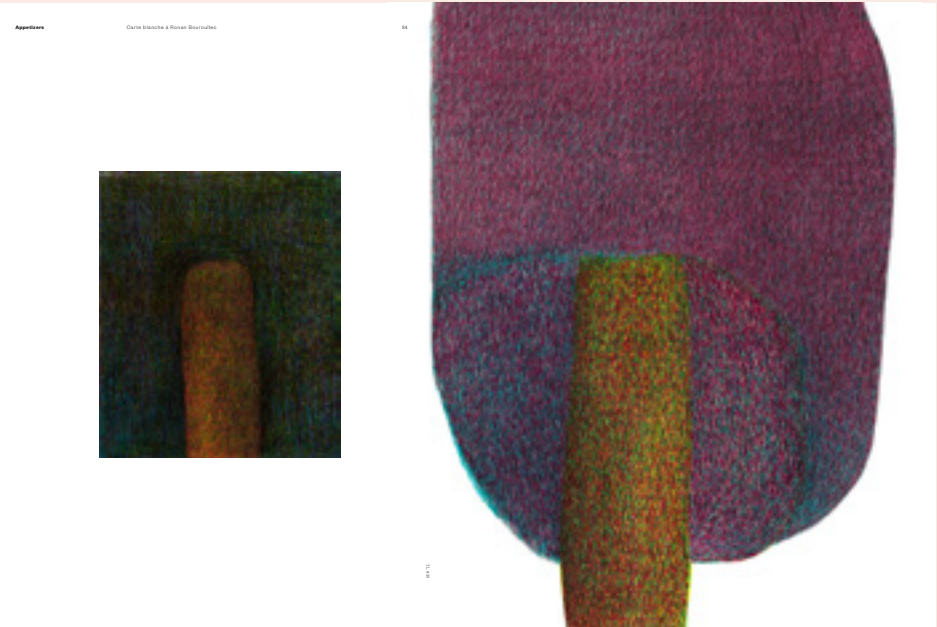
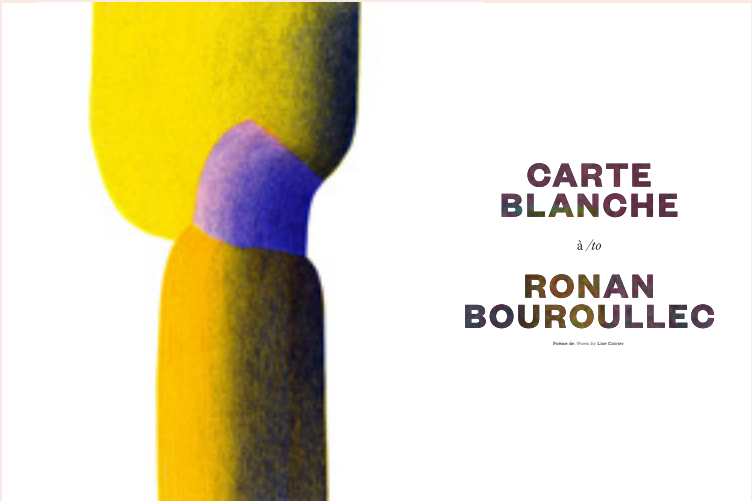
714 #36

# Photographic Portfolios

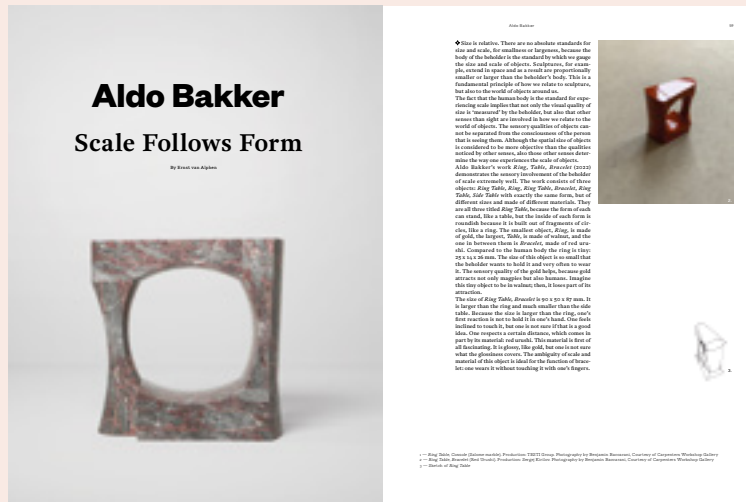


# Artists’ ‘Carte Blanche’

## Ronan Bouroullec



# Aldo Bakker



# Artists’ ‘Carte Blanche’

## Alfredo Haberli

Carte Blanche

Alfredo Haberli

1

Alfredo Häberli

Imagine honesty and transparency would be the fundamentals

By Alfredo Häberli

“Every now and then others ask me, like myself, what is the working device for the so very varied works that have been created in the new more than three decades of my time of creativity? Is it the fascination for a topic? The enthusiasm for a material or a technology? Or is it rather the human being that is in the center?”

In fact, there are a large number of themes that define my work – approaches, working points, perhaps words and even clearly formulated concepts. They often say, almost as if it found its traditional Chinese language kinship. Observing is the most beautiful way of thinking. I need to see in order to think.

If you describe my work in two words, they would be other than *Super Normal* or *Inger Normal*. It would be *Profound* and *Power*, even if *Power* sounds a bit childish when you say it about yourself. But to that I must add the non-finite, non-descriptive and intangible.

There are manifestations that seem to be generated as if by chance, such as *I ONLY WORK FOR PEOPLE*. I think I found this original linguistic structure in the desire to create something with other people for people that touches. Once I managed my “Open UP” for a project based on the *code* of a manifesto in which the fit found not only for Häberli, but also for Thomas, Henry, Harry (Pavoni), Haskel and Hanne – and today would probably also read for Hanne, to Hanne, Hanne, Hanne are listed terms that have always shaped, are shaping and will continue to shape my work.

Therefore, I appreciated the kind invitation to this *Carte Blanche* and am now happy to cover this space with more projects and now also show the diversity and clear position of my work. Not at all when these and so contemporary, controllable and cool things manifest in the right or left and in the hope of inspiring readers and observers.”

... Portrait by Andreas Winkler by Roger (David) Jossi  
“Haberli-Häberli in the Best of 2020”

Carte Blanche

Alfredo Häberli

2

Alfredo Häberli

HIER IST SCHÖN

**Porsche Zentrum Zürich**  
*Das Gewicht der Leichtigkeit*  
Autos für ein einziges Element

My aim is to achieve as much as possible with as little as possible, either through the chosen topic or through the material used, the lines drawn or the surfaces are. This is where I imagine the beautiful, clean and simple parallel to the Porsche gift, large and beautifully shaped surfaces, supported only by a few joints, form a simple and elegant shape that is reduced to an extraordinary silhouette.

With my intervention I emphasize and underline this aesthetic. My artwork is a modern and contemporary addition that celebrates the bodywork art of the Porsche gift as sculpture and transfers it into today. It is an added value that makes the vehicle unique in the world of the collection. Made by very delicate, are the hand-applied colour surfaces, which become increasingly refined, elegant and timeless after longer observation.

Carte Blanche

Alfredo Häberli

3

Carte Blanche

Alfredo Häberli

4

**HUMAN ONESTY EART UMBLE UMOR**

**Moroso**  
*Taba*  
Family of upholstered furniture (2000), Italy

The furniture of the Taba collection is formed by superimposed organic lines. The inspiration for these shapes comes from an old Argentinian game, which is made from a cow bone. The asymmetrical lines create various seating possibilities, which offer a wide range of uses. Horizontal surfaces were deliberately created, as they are well suited as storage space or can be used for working.

When using the furniture, the interaction of people should also be in the foreground. The Taba collection consists of a total of eight pieces: a sofa, two swivel armchairs, a bench and four poufs. These offer a wide range of possible uses in both public and private areas.

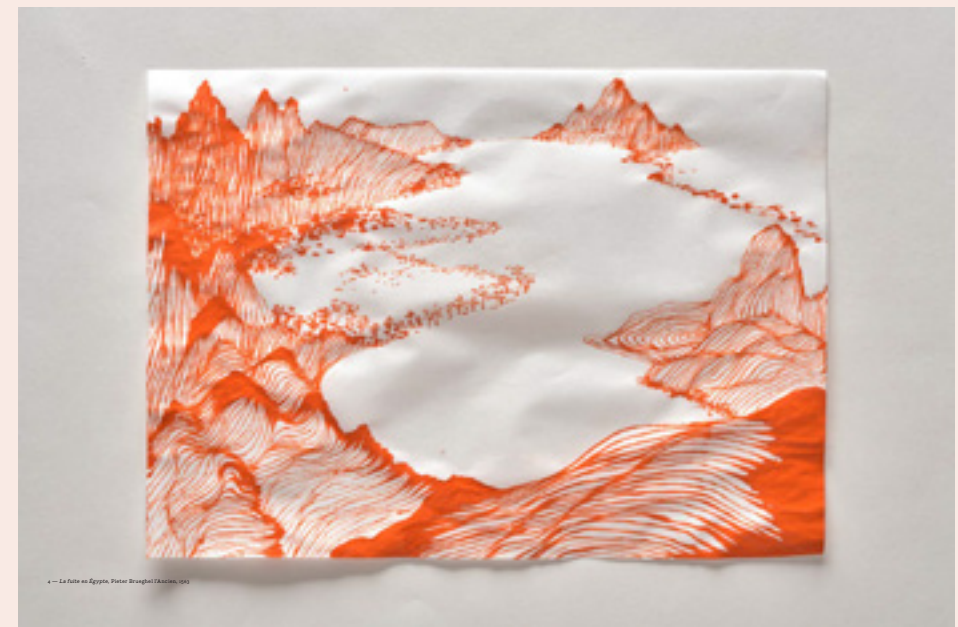
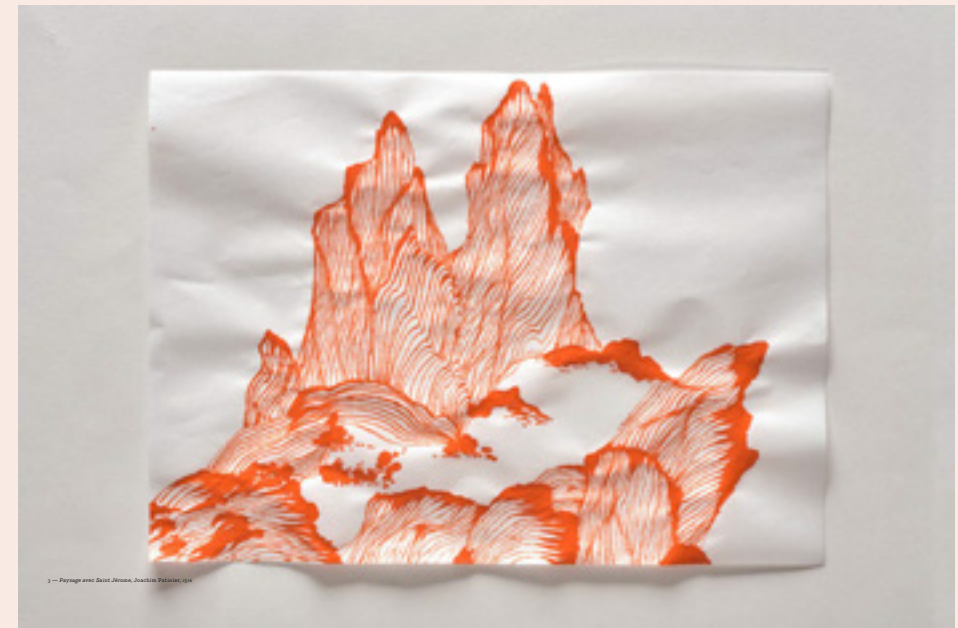
# Artists' 'Carte Blanche'

## Andreas Eriksson



# Artists' 'Carte Blanche'

## Sophie Whettnall



# Artists' 'Carte Blanche'

Kiki van Eijk & Joost van Bleiswijk



# Artists' 'Carte Blanche'

## Tomas Libertiny



# Guimet

[illegible]

# Museums’ ‘Carte Blanche’

## Cycladic Museum Athens

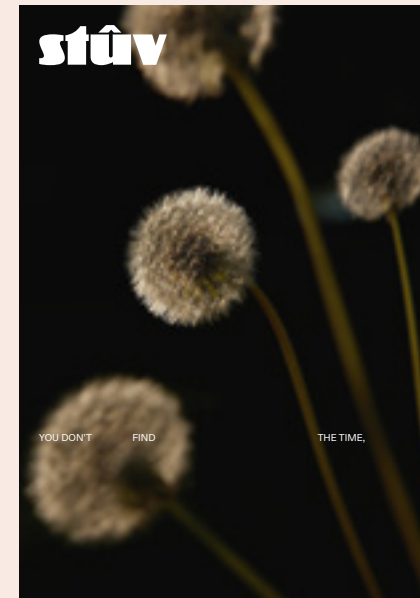


# Brand Partners

Print advertisement is available in TLmag. TLmag collaborates with accessory, furniture, car, jewellery, watches, fashion, hospitality, lighting and textile brands appropriate for the focus of each issue. TLmag offers different levels of exposure: interior front cover, interior back cover, back cover, opening pages, double spreads, single-page campaigns and looks to integrate each artwork within the overall flow of each issue.

## Main Brand Partners:

Alaïa	Mini	Brokis	Maison Kitsuné
Armaggan	Neotlith	Bulo	Maserati
Chanel	Nude Glass	Cromarbo	Mini
Cromarbo	Nurus	Desimpel	Neotlith
Delvaux	Panerai	Dice Kayek	Nude Glass
Diane von Furstenberg	Paule Ka	Diptyque	Nurus
Dice Kayek	Piaget	Edra	Panerai
Dior	Pierre Bergé & Associés	Gaggenau	Paule Ka
Hermès	Pulpo	Guy Laroche Paris	Piaget
Guerlain	Rado	Henrik Vibskov	Pierre Bergé & Associés
Shang Xia	Roca	Shang Xia	Pulpo
House Hotels	Serax	House Hotels	Rado
Hussein Chalayan	Serge Lutens	Hussein Chalayan	Serax
Iittala	Shiseido	Iittala	Serge Lutens
Issey Miyake	Stellar Works	Jaguar	Shiseido
Karl Lagerfeld	The Rug Company	Jean Paul Knott	Stellar Works
Kenzo	Valerie Objects	Jovoy	TF Urban
Klaus K Hotel	Van den Weghe	Klaus K Hotel	The Rug Company
Lempertz Auctions	Vipp	Lempertz Auctions	Thonet
Land Rover	Vitra	Land Rover	Valerie Objects
Lasvit	Wästberg, 2tec2	Lasvit	Van den Wegh
Laufen	Abet Laminati	Laufen	Vipp
Limited Edition	Armaggan	Limited Edition	Vitra
Maison Martin Margiela	Audi	Maison Dandoy	Wästberg
Maserati	BMW	Maison Francis Kurdjian	etc.



edra

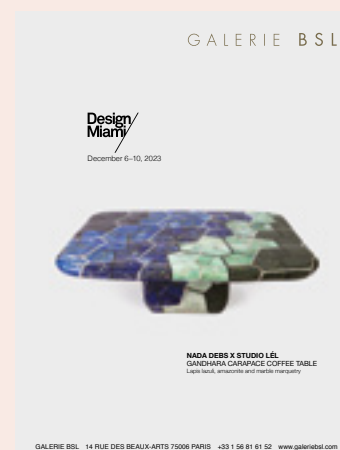
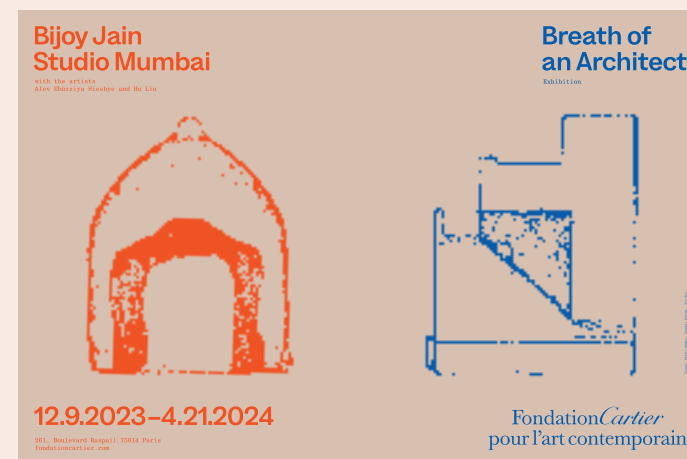


# Gallery & Museum Partners

TLmag maintains strong relationships with design/art and art galleries throughout the world. A steady presence at major gallery fairs, such as Design Miami/Basel, PAD Paris & London, Art Brussels, makes TLmag a strong media partner for the creative industries. Positioned at the heart of a growing Brussels collectible art and design, the magazine frequently collaborates with of local and international galleries and art events. TLmag also develops partnerships with major museums and cultural institutions all around the world. TLmag has worked closely with organisations like the Finnish Cultural Institute to the Benelux, Norwegian Craft for Révélations Paris, Polish Cultural Institute and Culture.pl, IKSU Istanbul, Taiwan National Craft Institute...

## Main Gallery & Museum Partners

Atomium	Galerie Mougins	Institut suédois
Ammann Gallery	Galerie Jacques Lacoste	MUDAM Luxembourg
James Gallery	Puls Gallery	MUDAC Lausanne
Sarah Myercough	Galerie Daniel Templon	Musverre
Gallery Kuzenbauch	Galerie Michel Rein	Yigge Ceramic Arts Museum
Galerie Laffanour-Downtown	Galerie Lelong & Co	CID Grand Hornu
Galerie Maria Wettergren	Triode Gallery	National Museum Finland (30)
MAD Paris	Spazio Nobile Gallery	Vessel Gallery
National Museum Finland	Axel Vervoordt	Maison Louis Carré
Institut finlandais	Maison du Danemark	Carpenters Workshop Gallery
Galerie Gosserez		etc.
Galerie BSL		



# Event & Media Partners

## Events, Fairs and Festivals

Ambiente	Design Junction	Biannual
Art Brussels	Design Miami/	Istanbul
Biennale Design	Design September	Contemporary
Internationale	Brussels	London Design
Saint-Etienne	Design Show	Festival
Biennale Interieur	Shanghai	London Design
Biennale	Design Parade	Biennale
Internationale de	DMY Berlin	Lunch With An
Vallauris	Domotex	Architect
BRAFA	Dutch Design Week	Maison&Objet
Brussels Art Days	FIAC	PAD Paris & London
Brussels I Love You	Heimtexil	Paris Design Week
Business of Design	Helsinki Design	Paris Photo
Week Hong Kong	Week	Texworld
Collectible Design	Iconic House	Design Days Tokyo
Fair	Network	Stockholm Furniture
Design Days Dubai	imm Cologne	& Light Fair
Dubai Design Week	Istanbul Design	Volta...

## Media & PR

ART	Communicart	IDEAT
Communications	Designboom	M18pr
Alexandra PR	Di Palma Associati	Modern Magazine
Alpha Kilo Creative	DigitalMind	Nadine Johnson PR
Architonic	Duende	Negri Firman
Arthouse	Fitzandco	Susan Lewin Grant
Atelier PR	Hello Third Eye	PR
Blue Medium	Hirondelle	Zetteler
Camron PR	Communication	etc.



# Rates

## Print Rate (excl., VAT 21%)\*

Full Page: 3000€

Double Page (Entry pages): 4000€

Facing Contents Page: 3500€

Inside Back Cover: 4000€

Back Cover: 6000€

## Print Advertorials

2 Pages: 1000€

3 Pages: 1500€

4 Pages: 2000€

## Online Rates (excl., VAT 21%)\*

Banner: 500€

Customised Banner: upon request

Online Edition - Banner + 1 article: 800€

Banner + 3 articles: 1500€

## Newsletter Rates (excl., VAT 21%)\*

TLmag Monthly Digest Newsletters

(30,000 + contacts) Top Item: 700€

## Combo Rates

Print, Web, Newsletter & Social Media

Advertisement packages: upon request

\* (intracommunautary VAT tax

international clients outside Belgium)



# Specifications

## Print

Full Page: 210mm × 280mm

Double Page: 420mm × 280mm

+5mm bleed + cropmarks/ PDF, CMYK

## Online Banners

(.jpeg & .gif with URL)

240 × 240 px (Square Pop-Up)

Customised Banner: upon request

## Newsletter

*TLmag* Monthly Digest: 700px × 700px

Customised Newsletters: upon request

## Terms & Conditions

+ VAT: 21% (Belgium)

+ We reserve the right to charge additional fees for major alterations.

+ Word counts submitted over a max 50 word limit will be edited.

+ Copyediting may be made at the discretion of the editorial team.

+ Images submitted will be resized.

+ *TLmag* is not liable for any loss or damage from errors, late publication or non-publication.



# Our Colophon

**Publishers:** Lise Coirier & Gian Giuseppe Simeone

**Editor-In-Chief**

Lise Coirier, [lise@tlmagazine.com](mailto:lise@tlmagazine.com)

**Editorial Manager**

Blaire Dessent, [blaire@tlmagazine.com](mailto:blaire@tlmagazine.com)

**Brussels Office (mailing & billing address)**

TL Magazine / Pro Materia Gallery (Spazio Nobile)

Rue Franz Merjay 142

B-1050 Brussels

VAT BE0457 003 721

**Paris Office**

7 rue Roy F-75008 Paris

**Advertising & Special projects**

[info@tlmagazine.com](mailto:info@tlmagazine.com)

+ 32 (0) 475 53 19 88

**TL Magazine is published by Spazio Nobile Editions**

Lise Coirier & Gian Giuseppe Simeone

[lc@spazionobile.com](mailto:lc@spazionobile.com), [ggs@spazionobile.com](mailto:ggs@spazionobile.com)

+32 (0) 475 53 19 88

**Communication & Subscriptions**

[info@tlmagazine.com](mailto:info@tlmagazine.com)

**Web Master:** Floris Douma

[www.tlmagazine.com](http://www.tlmagazine.com) / [www.spazionobile.com](http://www.spazionobile.com)



# TL<sup>34</sup>mag

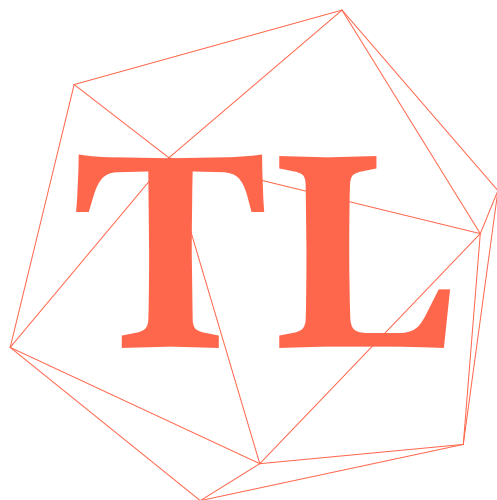
True Living of Art & Design

AH/AW 2020-21:

*Précieux, Une Géologie de l'Être*  
*/Precious, A Geology of Being*

Guest Editor: Amy Hilton





**TL mag**<sup>35</sup>  
True Living of Art & Design

**PE/SS 2021:**  
*Textile/Tactile/Texture*  
**Guest Editor: Annina Koivu**



# TL mag<sup>36</sup>

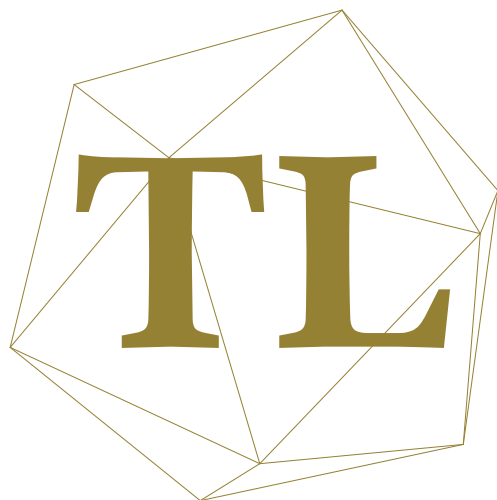
True Living of Art & Design

AH/AW 2021:

*Tout est Paysage / All Is Landscape*

Guest Editor: Bas Smets



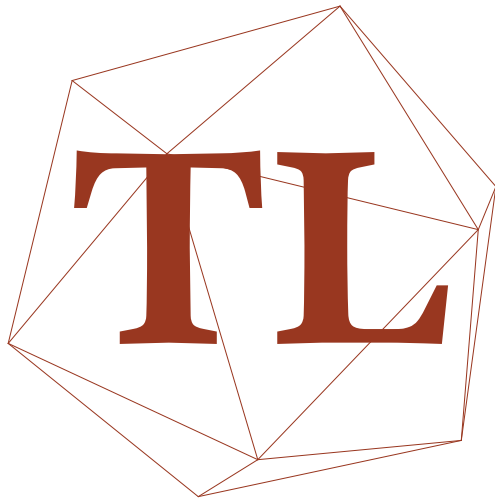


# mag<sup>37</sup>

True Living of Art & Design

**PE/SS 22:**  
*L'Âge d'Or / The State of Gold*  
**Guest Editor: Marco Sammiceli**



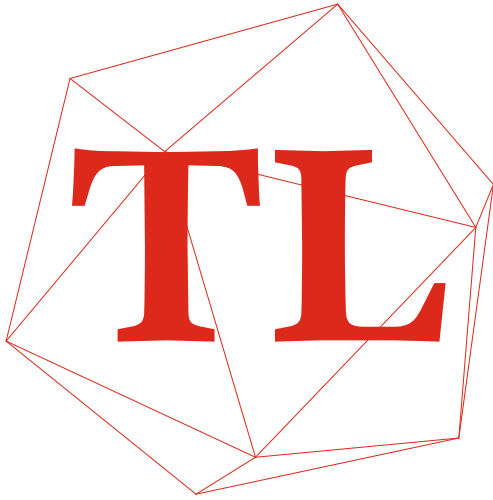


**TL mag<sup>38</sup>**  
True Living of Art & Design

**AH/AW 22:**  
*Origine / Origin*  
**Guest Editors: Lidewij Edelkoort  
& Philip Fimmano**



www.tlmagazine.com



# TLmag<sup>39</sup>

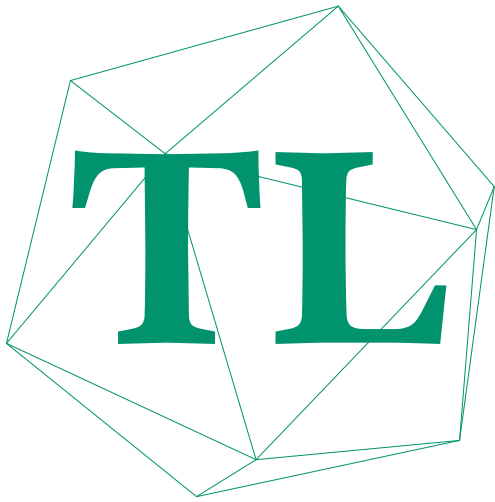
True Living of Art & Design

## 15th Anniversary

2023:  
*The Culture of the Object*  
15-year anniversary



www.tlmagazine.com



40  
True Living of Art & Design

2024:  
*The Ideal Home*  
Guest Editor: Chris Dercon



True Living of Art & Design



TLmag Yearly Edition 2024  
ISSN 978-2-331-886-03-9  
AUS\$ 8.00 / US\$ 4.00  
CAN\$ 8.00 / UK£ 4.00  
COP 145 / JPN¥ 1,717  
© 2024 TLmag  
9 782331 285039



True Living of Art & Design



TLmag Yearly Edition 2024  
ISSN 978-2-331-886-03-9  
AUS\$ 8.00 / US\$ 4.00  
CAN\$ 8.00 / UK£ 4.00  
COP 145 / JPN¥ 1,717  
© 2024 TLmag  
9 782331 285039



True Living of Art & Design



TLmag Yearly Edition 2024  
ISSN 978-2-331-886-03-9  
AUS\$ 8.00 / US\$ 4.00  
CAN\$ 8.00 / UK£ 4.00  
COP 145 / JPN¥ 1,717  
© 2024 TLmag  
9 782331 285039



**TLmag**

True Living of Art & Design

[www.tlmagazine.com](http://www.tlmagazine.com)  
[@tlmag](https://www.instagram.com/tlmag)